

# Downloading of Form C Application

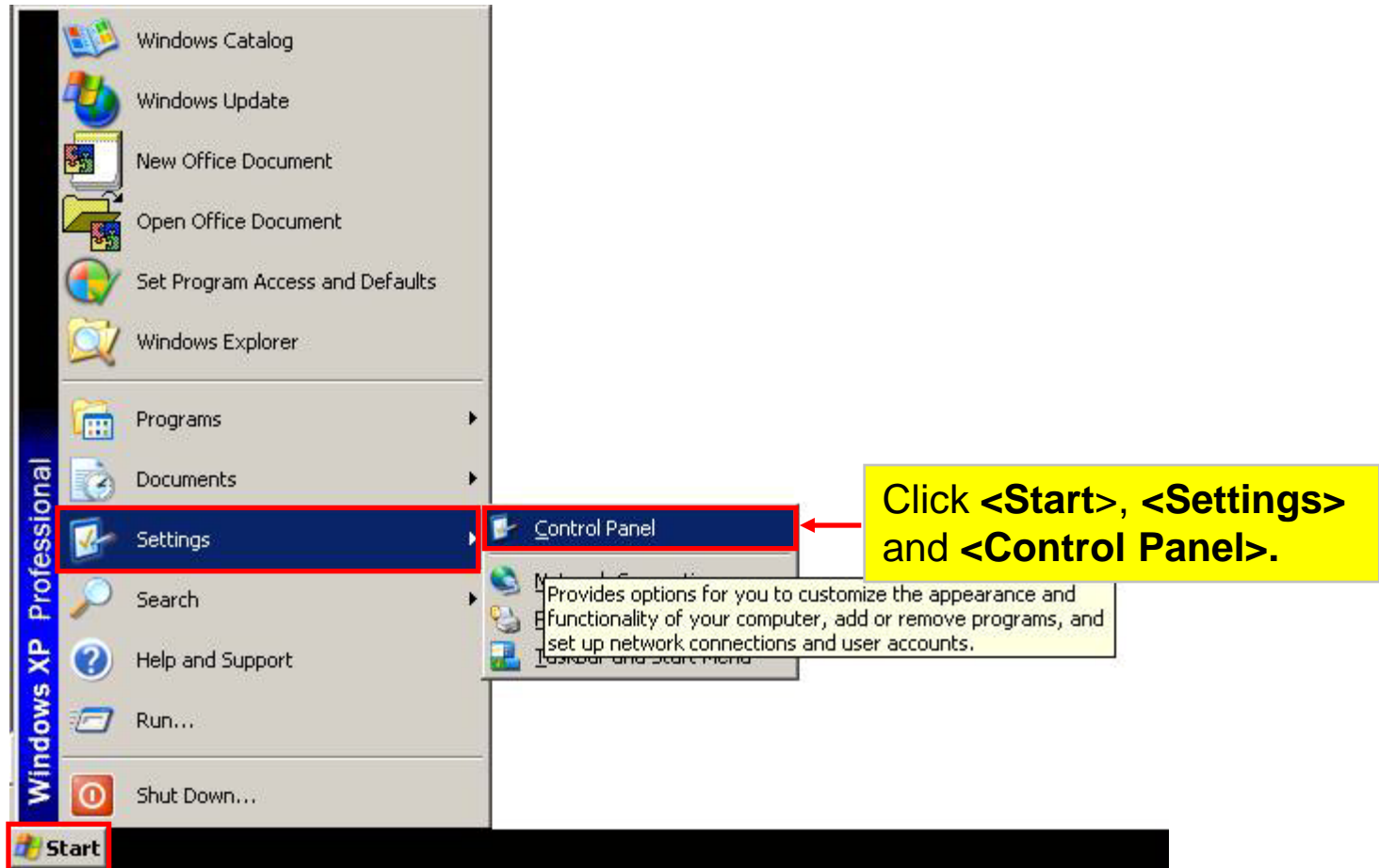


# Contents

1. [Download Microsoft Framework Version 1.1](#)
2. [Download Offline Application](#)
3. [Install Offline Application](#)
4. [Backup Storage file](#)
5. [Uninstall/Re-install the Offline Application](#)

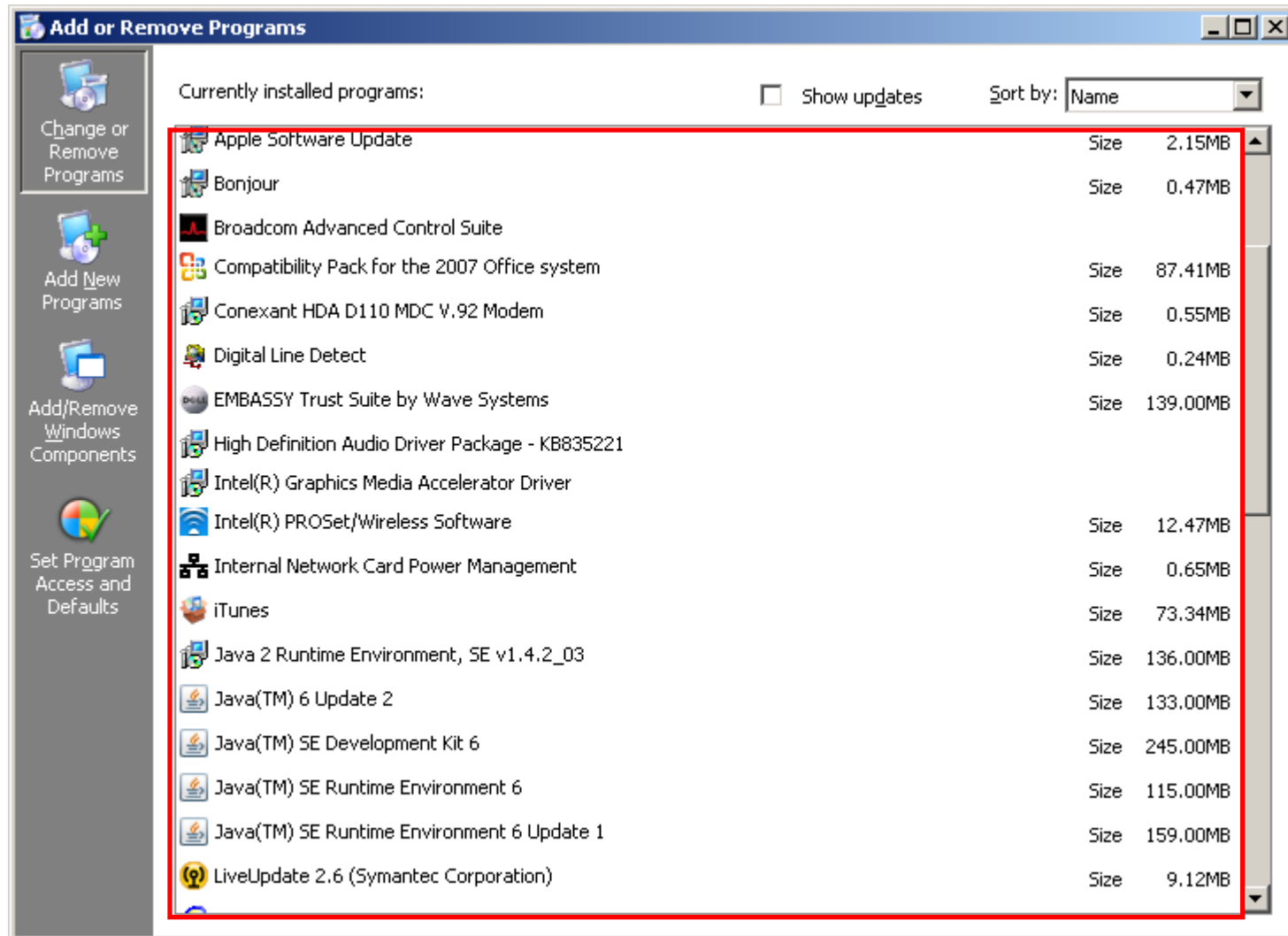
# Download Microsoft Framework Version 1.1

Check if current PC has Microsoft Framework Version 1.1 installed



# Download Microsoft Framework Version 1.1

Proceed to the next step if Microsoft Framework Version 1.1 is not in the list



# Download Microsoft Framework Version 1.1

Go to:

[http://www.microsoft.com/downloads/en/results.aspx?freetext=.net+version+1.1+redistributable+package&displaylang=en&stype=s\\_basic](http://www.microsoft.com/downloads/en/results.aspx?freetext=.net+version+1.1+redistributable+package&displaylang=en&stype=s_basic)

Title	Released	Popularity
<b>.NET Framework 3.5</b> Microsoft .NET Framework 3.5 contains many new features building incrementally upon .NET Framework 2.0 and 3.0, and includes .NET Framework 2.0 service pack 1 and .NET Framework 3.0 service pack 1.	11/20/2007	1
<b>.NET Framework Version 2.0 Redistributable Package (x86)</b> The Microsoft .NET Framework version 2.0 (x86) redistributable package installs the .NET Framework runtime and associated files required to run applications developed to target the .NET Framework v2.0.	1/22/2006	24
<b>.NET Framework Version 1.1 Redistributable Package</b> The .NET Framework version 1.1 redistributable package includes everything you need to run applications developed using the .NET Framework.		
<b>.NET Compact Framework 3.5 Redistributable</b> The Microsoft® .NET Compact Framework 3.5 Redistributable includes everything you need to test .NET Compact Framework 1.0, 2.0 and 3.5 applications.	1/3/2008	573
<b>.NET Framework Version 2.0 Redistributable Package (x64)</b> The Microsoft .NET Framework version 2.0 (x64) redistributable package installs the .NET Framework runtime and associated files required to run 64-bit applications developed to target the .NET Framework v2.0.	1/22/2006	1289
<b>Microsoft Component Installer Software Development Kit for Windows (x86) Version 2.0</b> Tool to package common redistributable runtime components for installation on an end user's computer.	4/24/2006	4737
<b>Visual J# .NET Version 1.1 Redistributable Package</b> The Microsoft® Visual J#™ .NET version 1.1 Redistributable Package includes everything you need to run your Visual J# .NET applications on a computer that already has the Microsoft .NET Framework version 1.1 installed.	4/9/2003	30099

Click <Microsoft Framework Version 1.1 Redistributable Package>

# Download Microsoft Framework Version 1.1

## Microsoft .NET Framework Version 1.1 Redistributable Package

### Brief Description

The .NET Framework version 1.1 redistributable package includes everything you need to run applications developed using the .NET Framework.

### On this page

- ↓ [Quick Details](#)
- ↓ [Overview](#)
- ↓ [System Requirements](#)
- ↓ [Instructions](#)
- ↓ [Additional Information](#)
- ↓ [Related Resources](#)
- ↓ [What Others Are Downloading](#)
- ↓ [Related Downloads](#)

#### File Name:

dotnetfx.exe

#### Size:

23.1 MB

Download

Click <Download>

### Quick Details

Version:

1.1

Date Published:

4/3/2003

Change Language:

English

Change

Estimated Download Time:

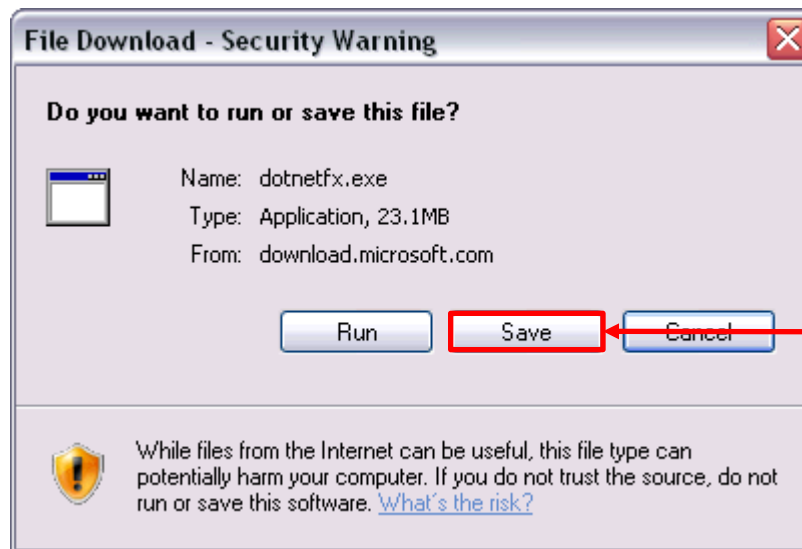
Dial-up (56K)

57 min



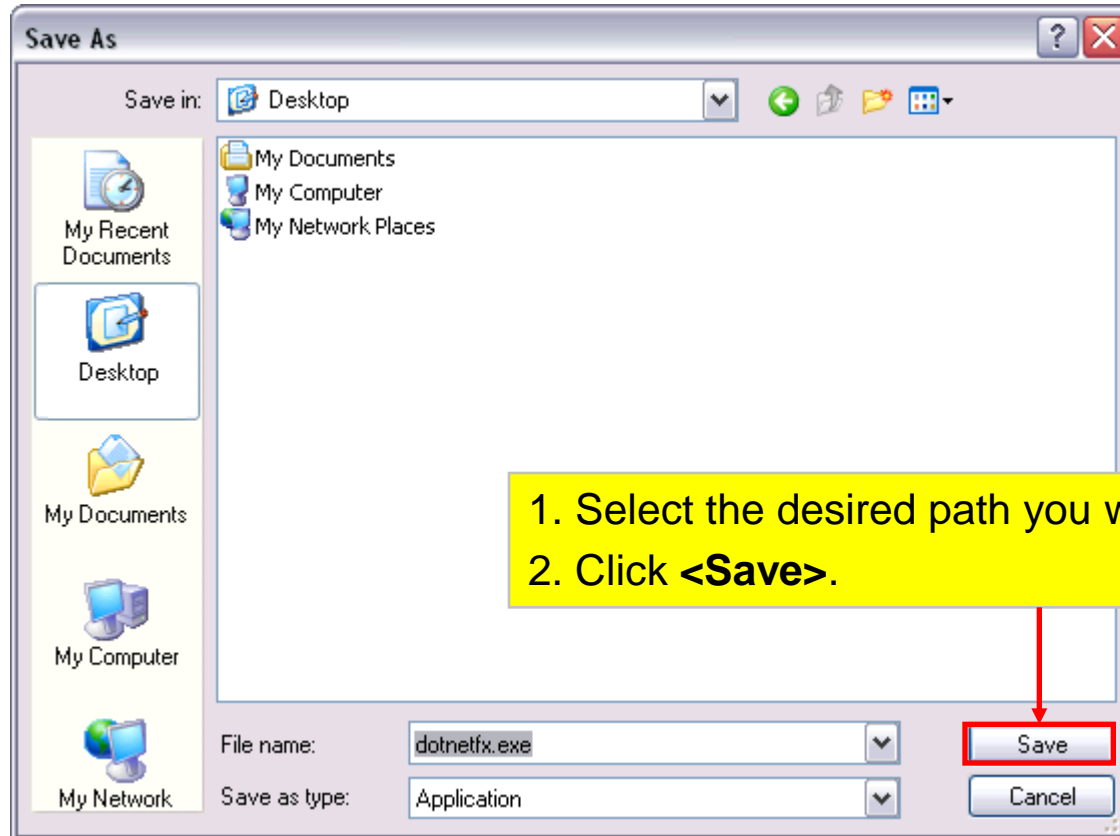
Microsoft .NET Framework 4  
(Standalone Installer)

# Download Microsoft Framework Version 1.1

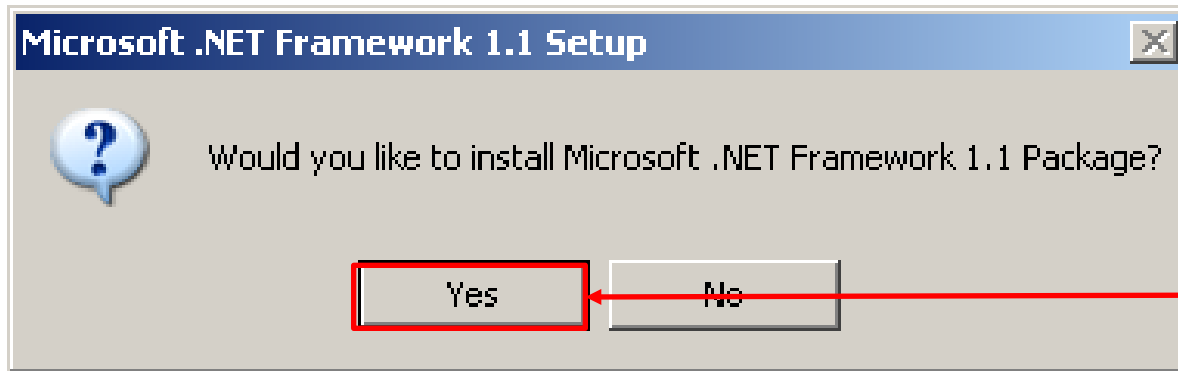


Click <Save>

# Download Microsoft Framework Version 1.1

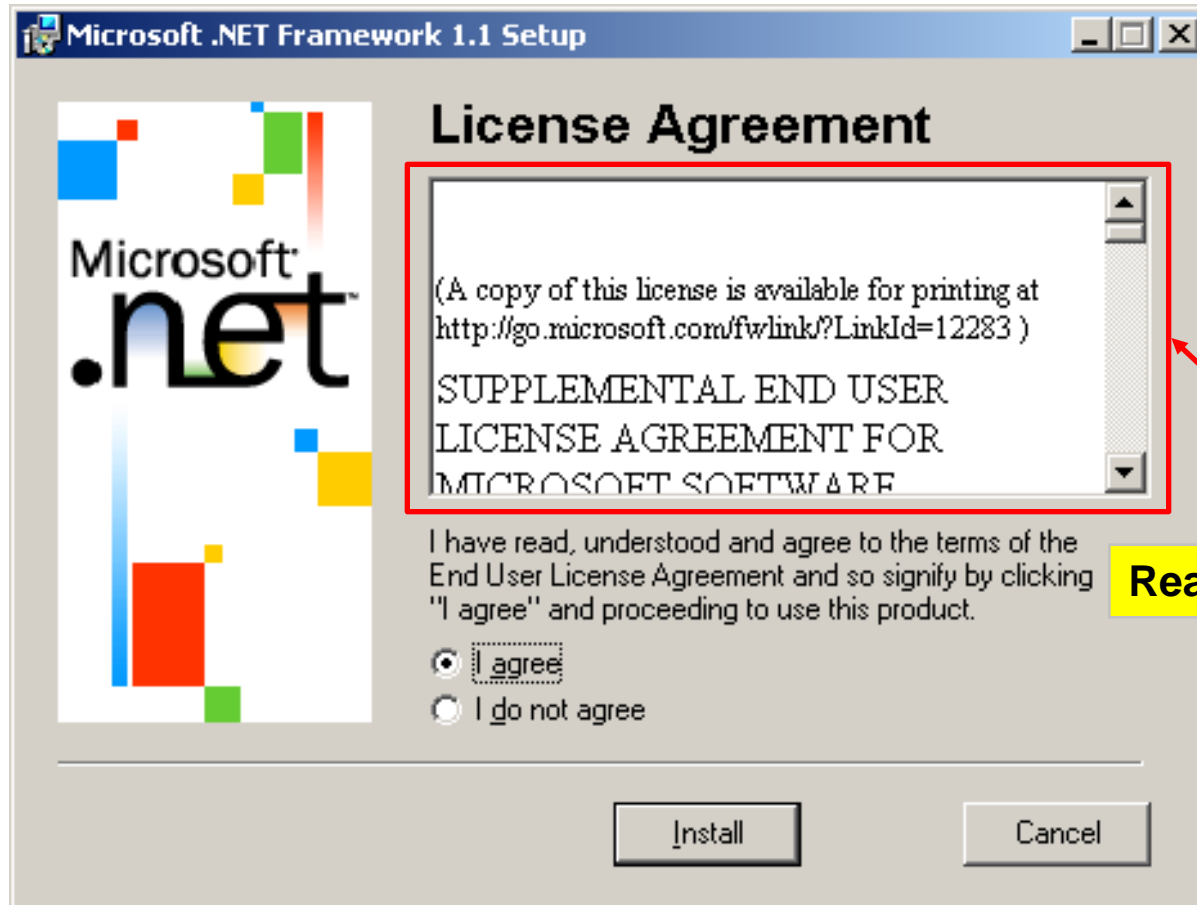


# Download Microsoft Framework Version 1.1



Click <Yes>

# Download Microsoft Framework Version 1.1



**Read License Agreement**

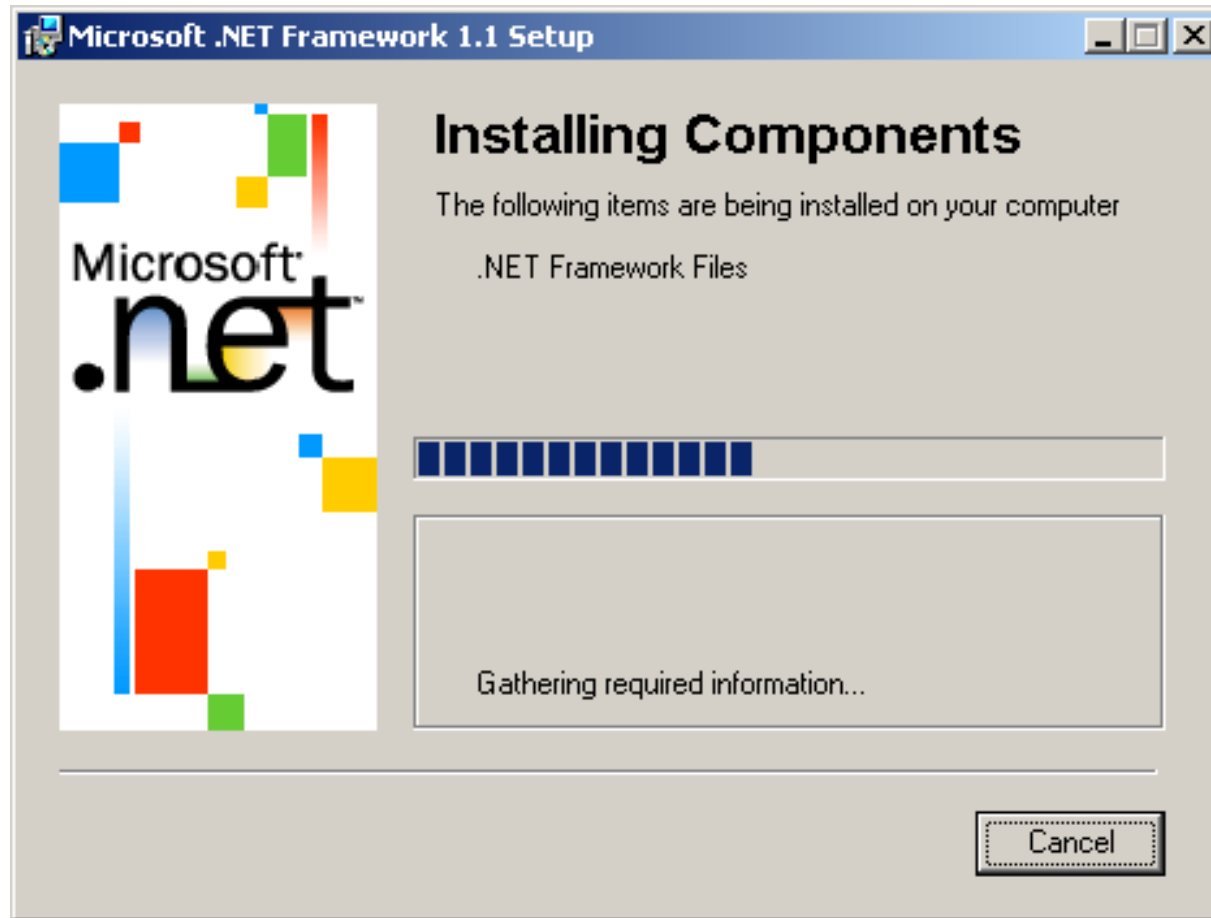
# Download Microsoft Framework Version 1.1



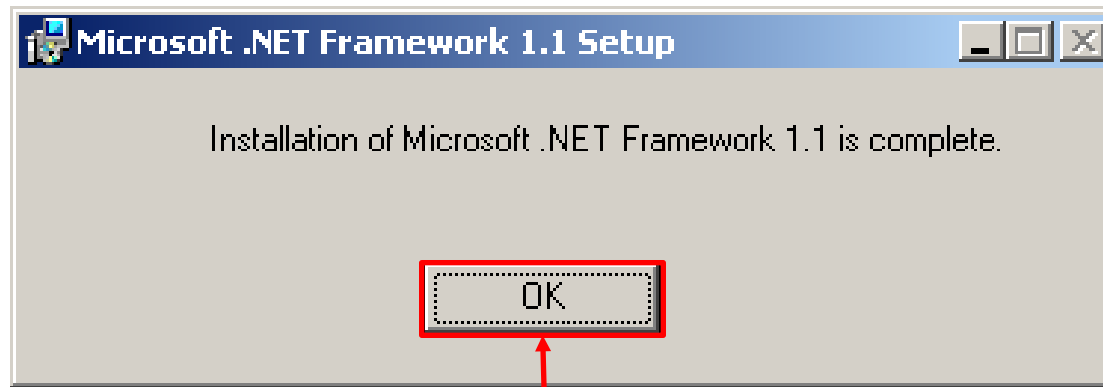
1. Select < I agree >
2. Click < Install >

# Download Microsoft Framework Version 1.1

Please wait for the downloading to complete.

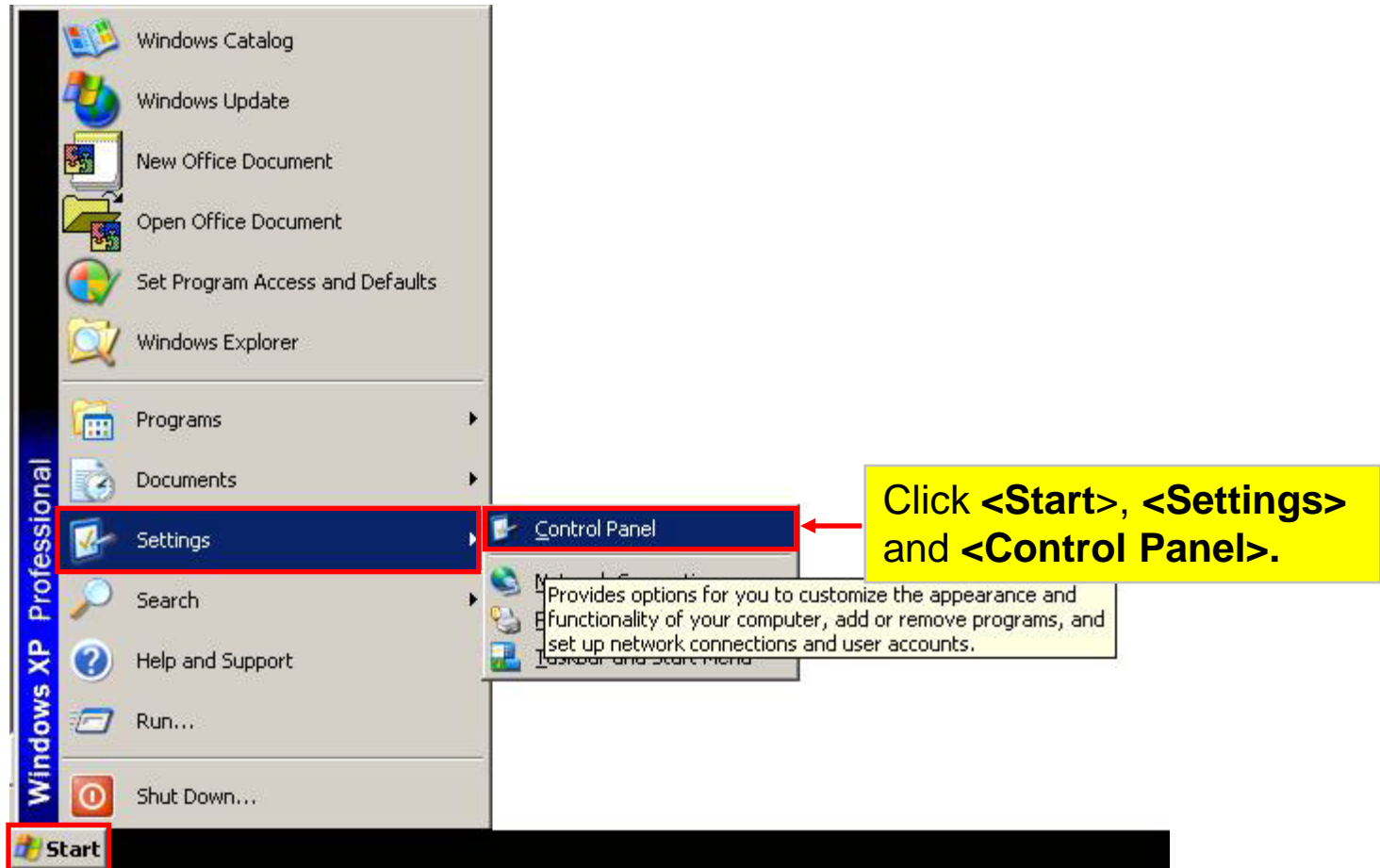


# Download Microsoft Framework Version 1.1

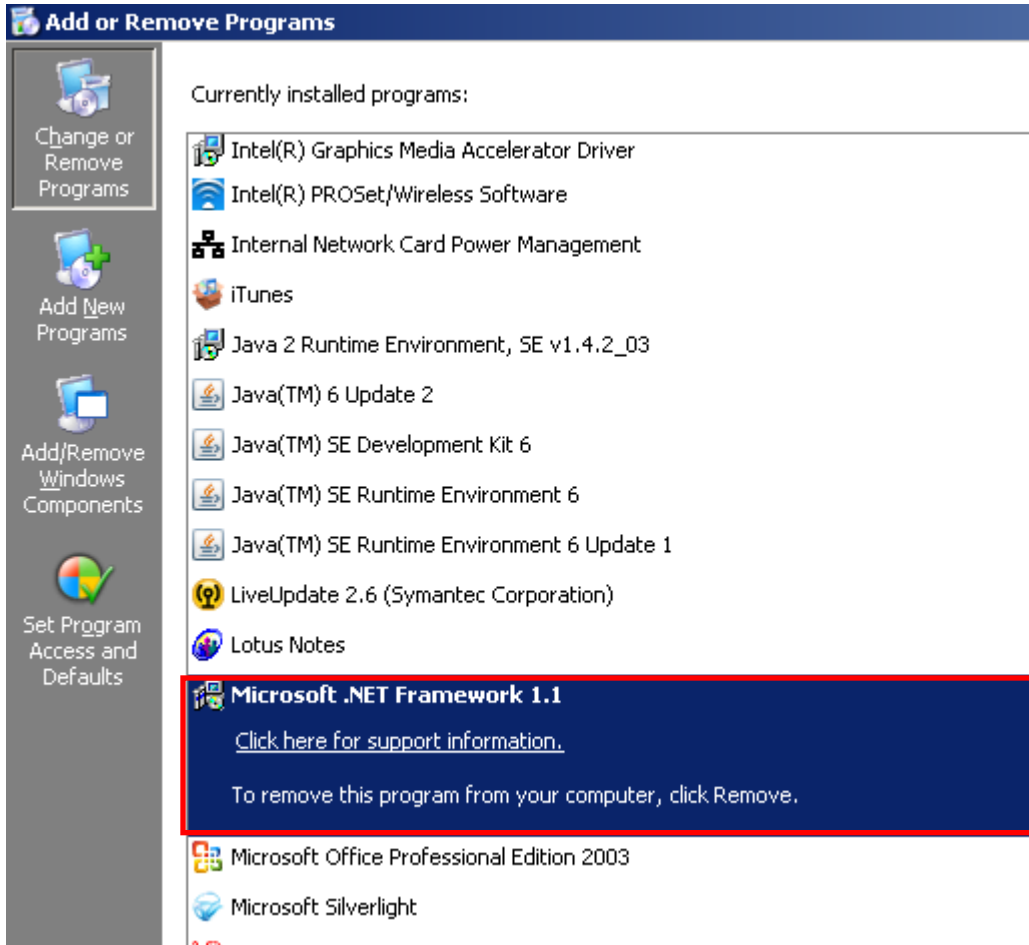


Click <OK>

# Download Microsoft Framework Version 1.1



# Download Microsoft Framework Version 1.1



Check Microsoft .NET Framework 1.1 exists

# Contents

1. [Download Microsoft Framework Version 1.1](#)
2. [Download Offline Application](#)
3. [Install Offline Application](#)
4. [Backup Storage file](#)
5. [Uninstall/Re-install the Offline Application](#)

# Download Offline Application

- Complete Form C and other relevant forms. Information in the tax computation template will be auto-included in the relevant Form C fields.

- Complete Form C and other relevant forms

**Step 3** Upload the Form C package for submission to IRAS via myTax Portal. Only persons authorised as "Approver" for Corporate Tax matters via [EASY](#) can submit the Offline Form C.

## Learn how to download the Form C Offline Application:

- ✦ [User guide on downloading Form C Offline Application](#)  (676 KB)



## Download the Form C Offline Application:

- ✦ [Offline Application](#) (.Net Application)  [Click here to download](#)

## User Guides on how to use the Offline Application:

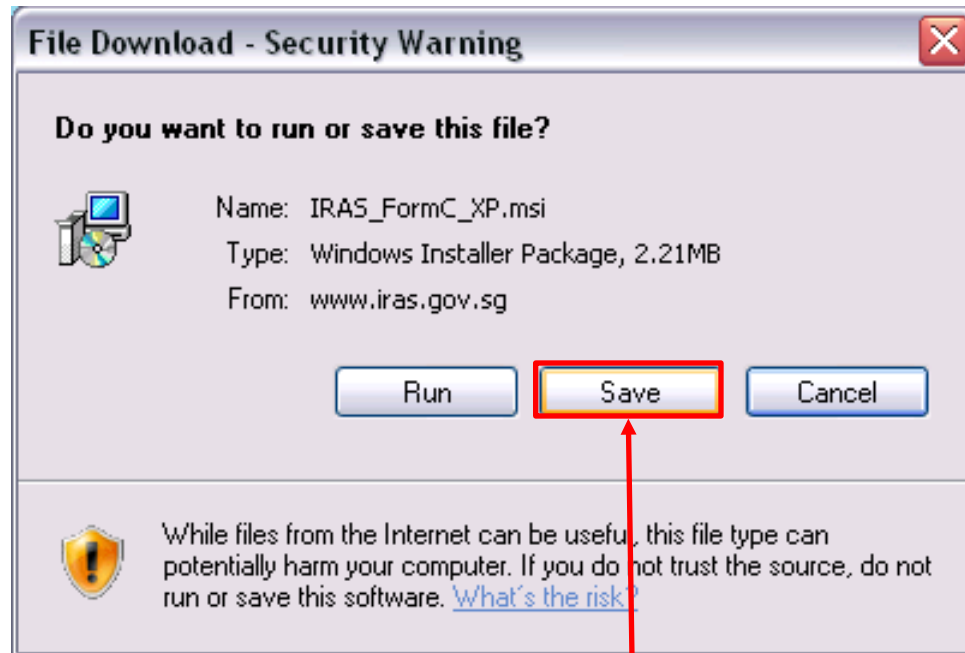
- ✦ [User guide on Offline filing of Form C \(Other Company<sup>1</sup>\)](#)  (341KB)
- ✦ [User guide on Offline Tax Computation for Trading Company](#)  (449KB)
- ✦ [User guide on Offline Tax Computation for Investment Holding Company](#)  (36KB)
- ✦ [User guide on Upload of Offline Form C \(Other company<sup>1</sup>\)](#)  (226KB)

## Frequently Asked Questions:

- ✦ [Frequently Asked Questions on Offline Form C \(Other Company<sup>1</sup>\)](#)  (42KB)
- ✦ [Frequently Asked Questions on Offline Form C \(Other Company<sup>1</sup>\) using IRAS Tax Computation Template \(Trading or Investment Holding Company\)](#)  (45KB)

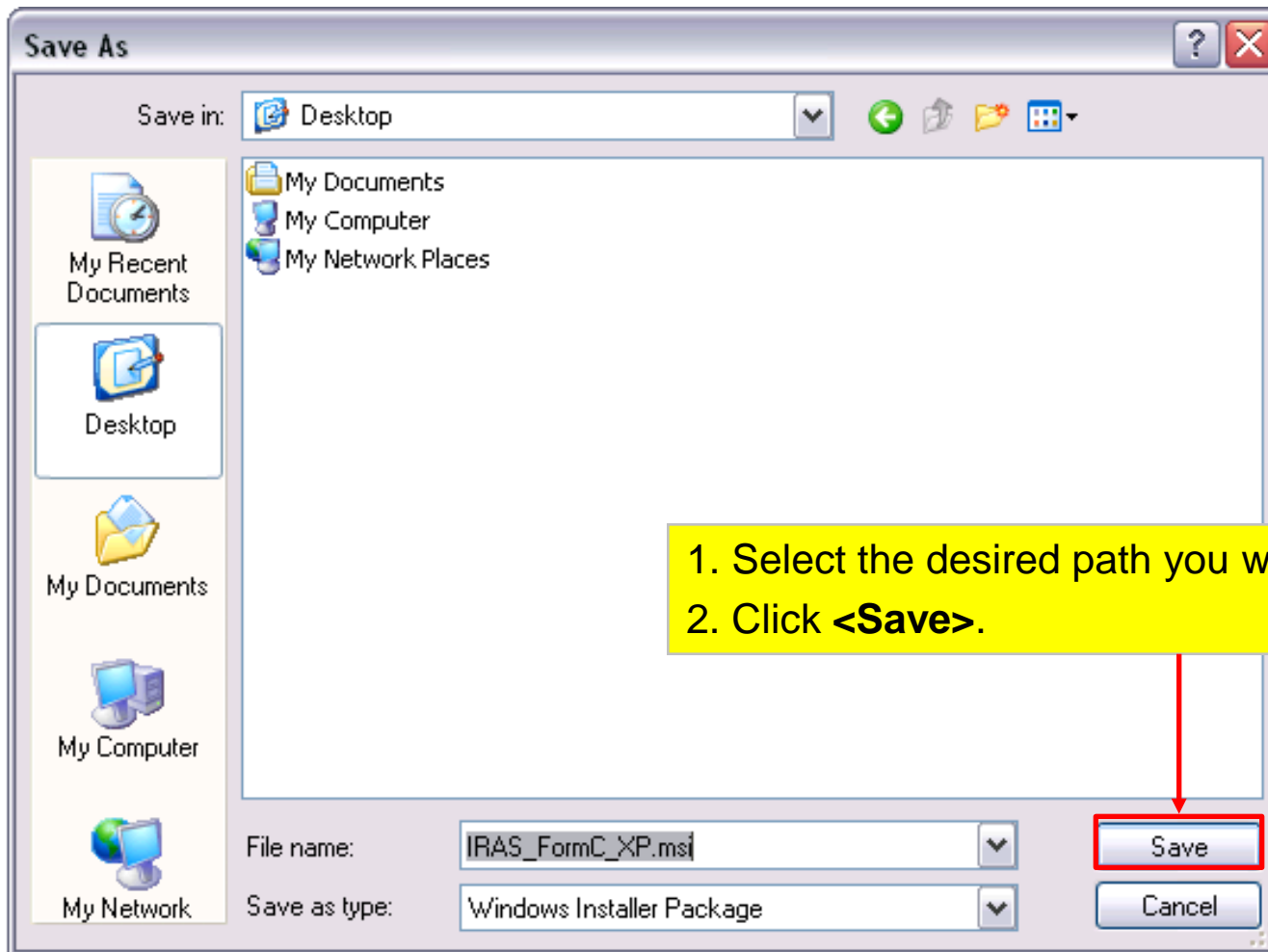
<sup>1</sup> Other Company refers to all companies except dormant company and service company

# Download Offline Application



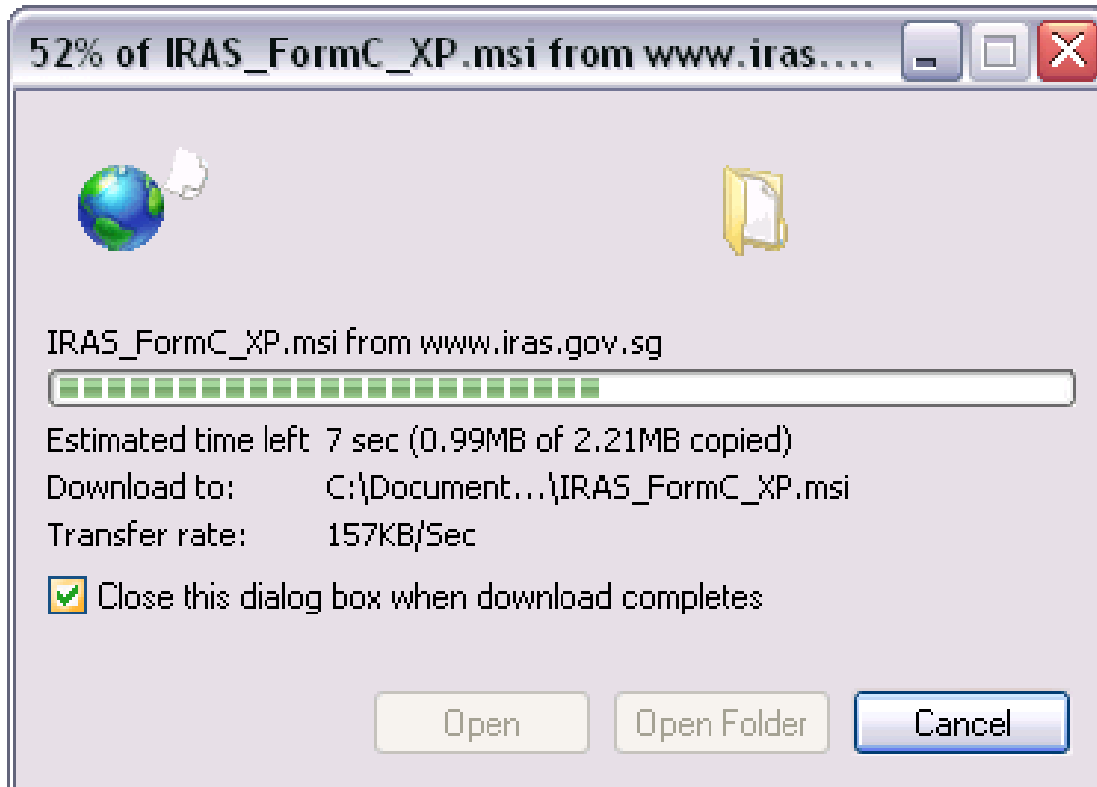
Click <Save>

# Download Offline Application

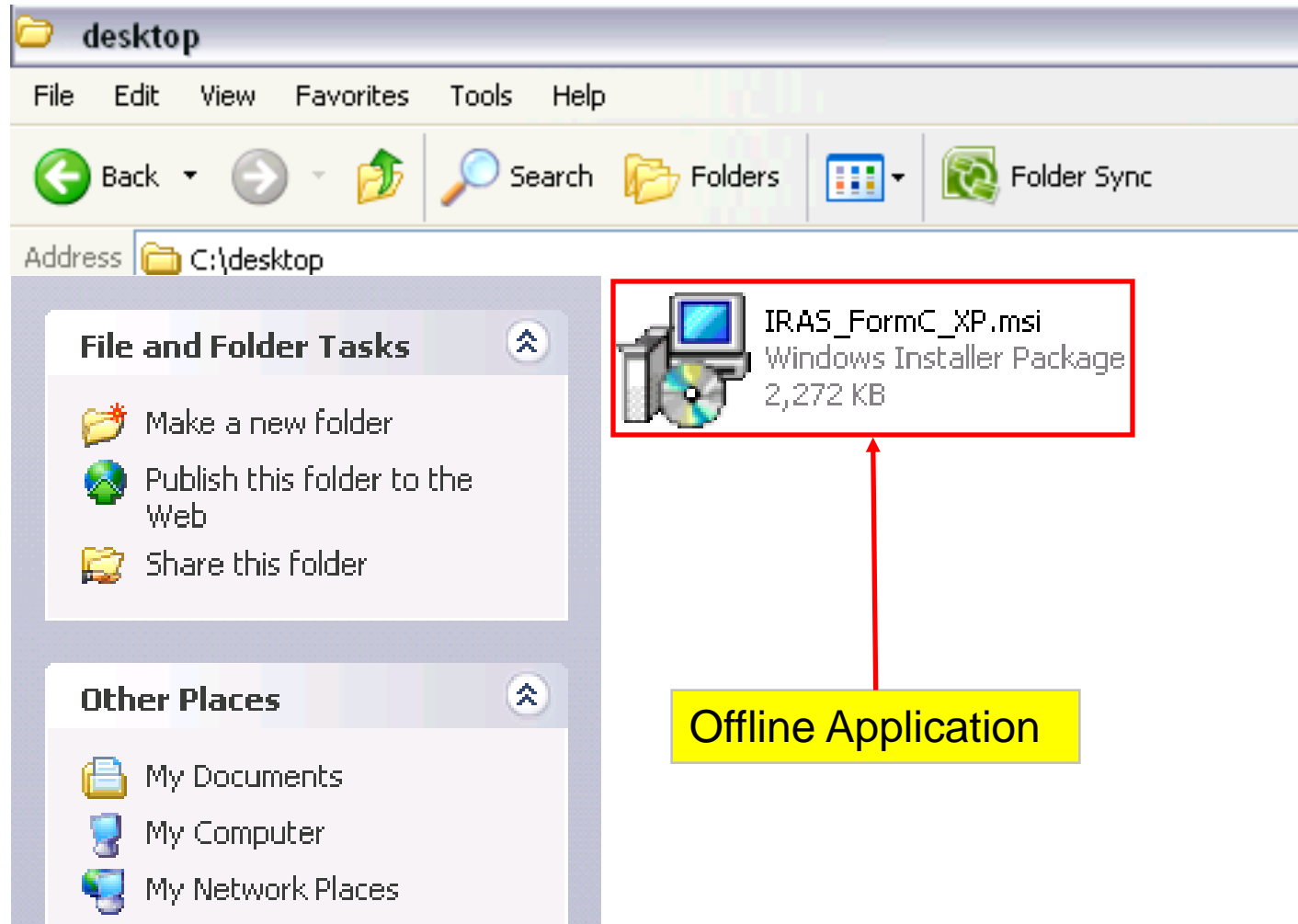


# Download Offline Application

Please wait for the downloading to complete.



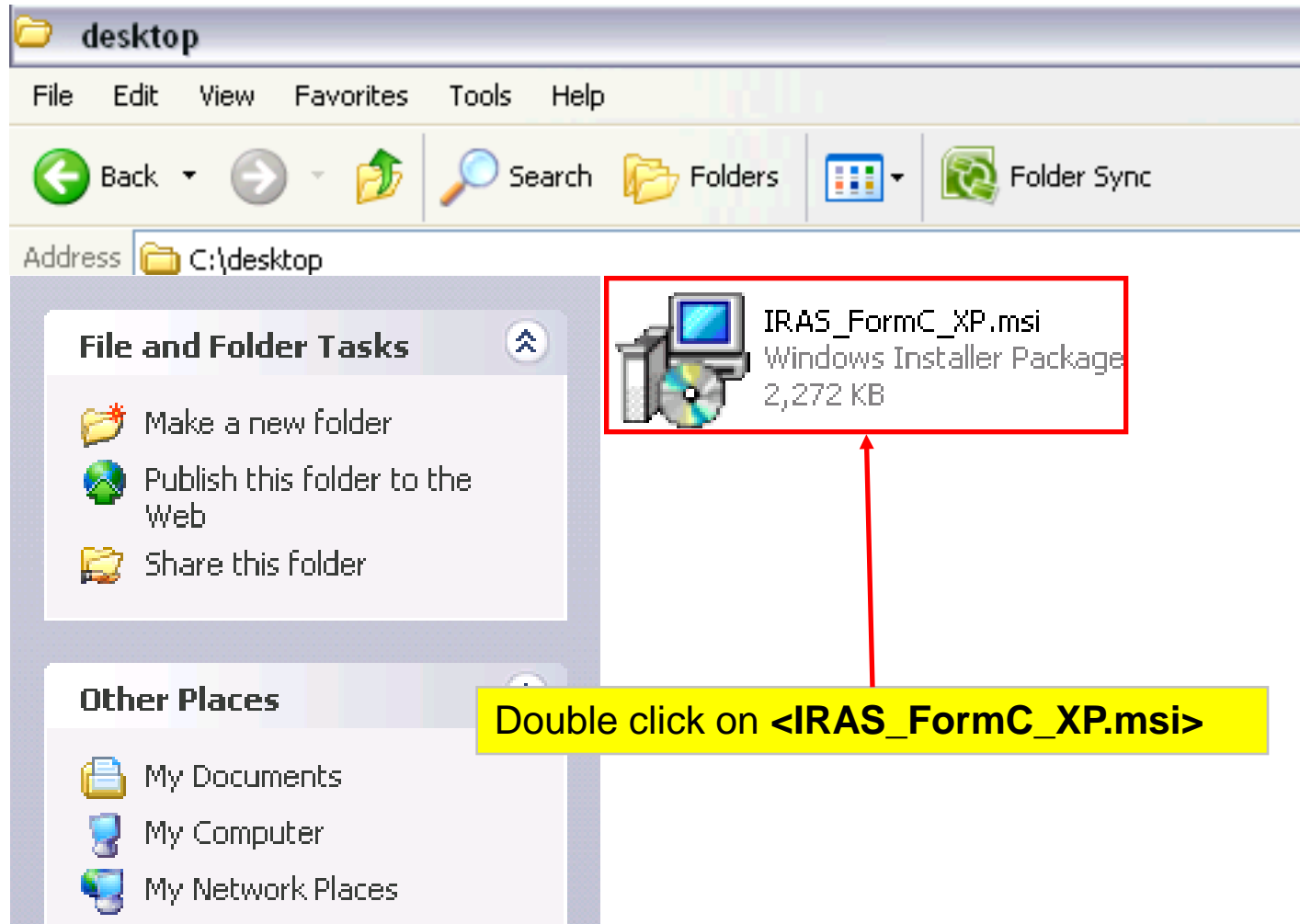
# Download Offline Application



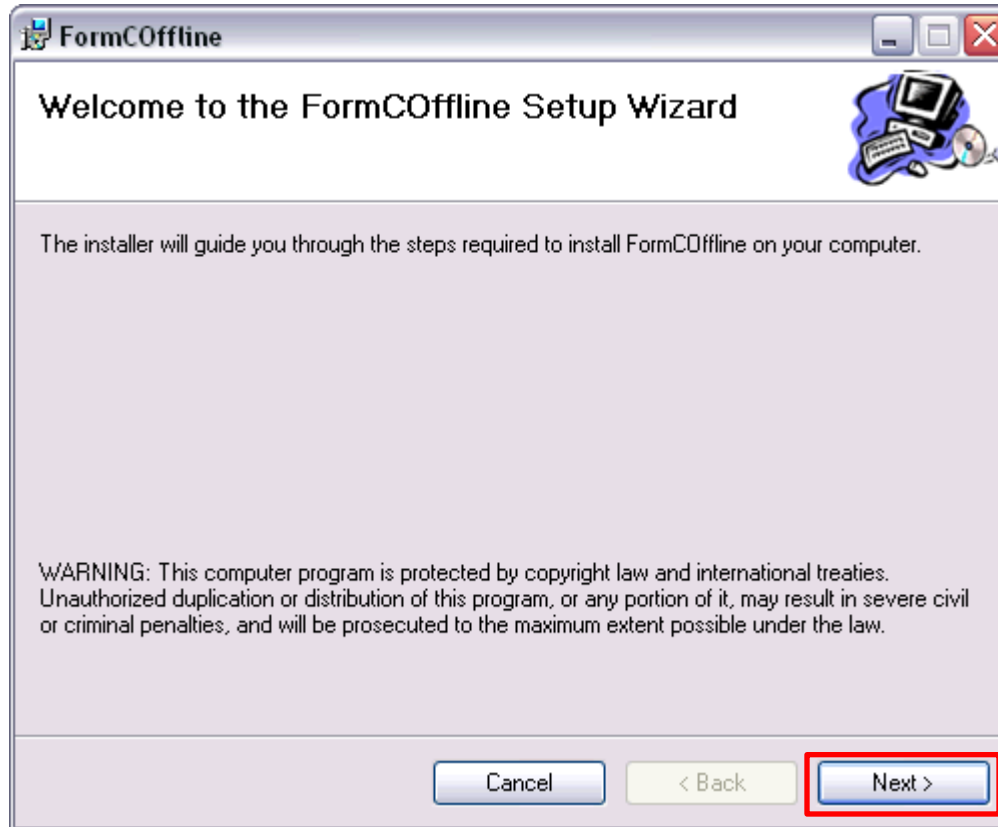
# Contents

1. [Download Microsoft Framework Version 1.1](#)
2. [Download Offline Application](#)
3. [Install Offline Application](#)
4. [Backup Storage file](#)
5. [Uninstall/Re-install the Offline Application](#)

# Install Offline Application

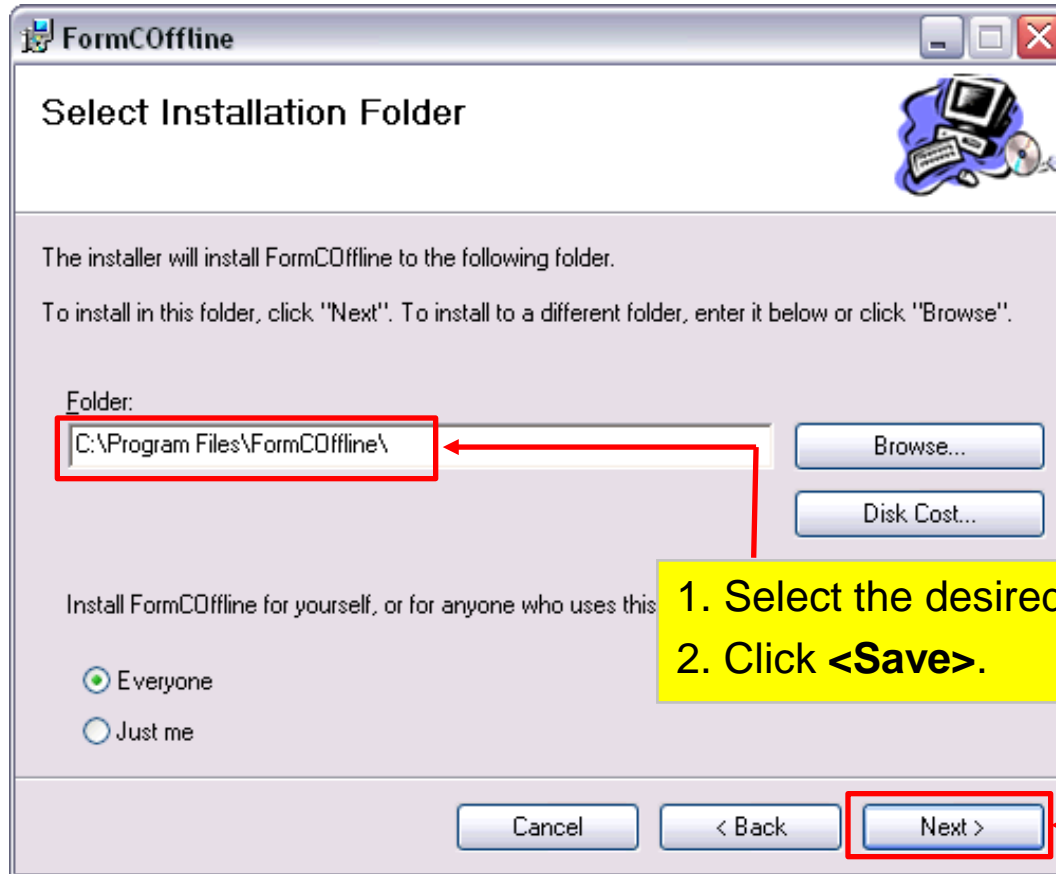


# Install Offline Application

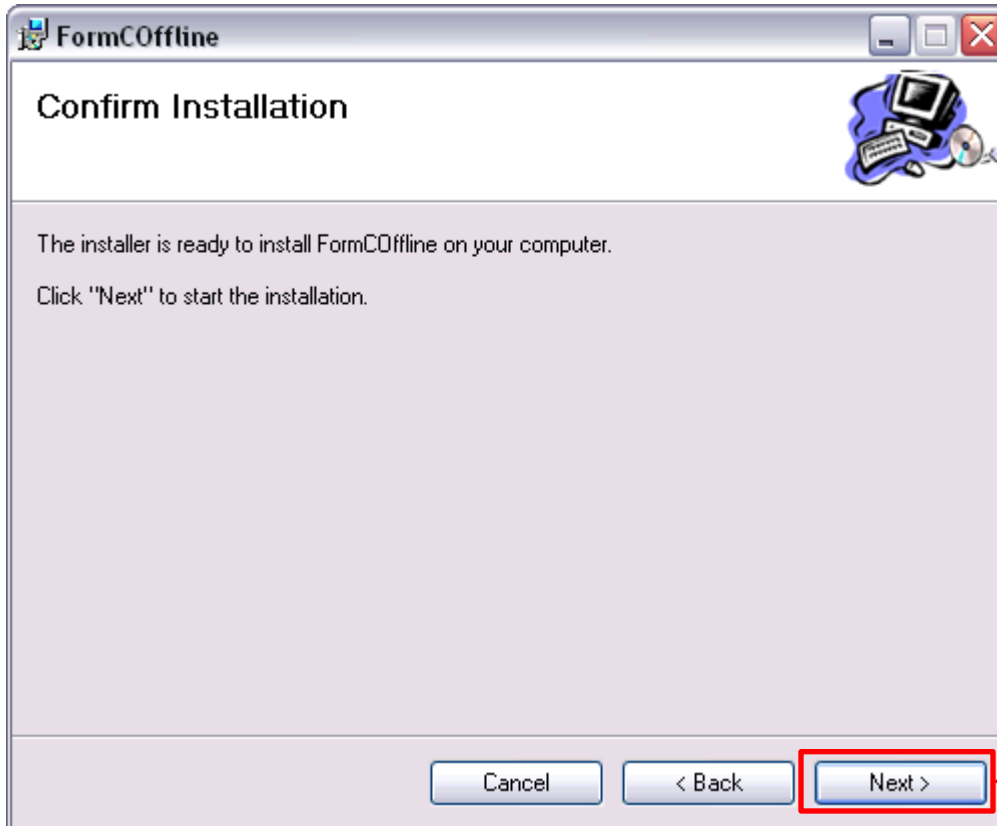


Click <Next>

# Install Offline Application



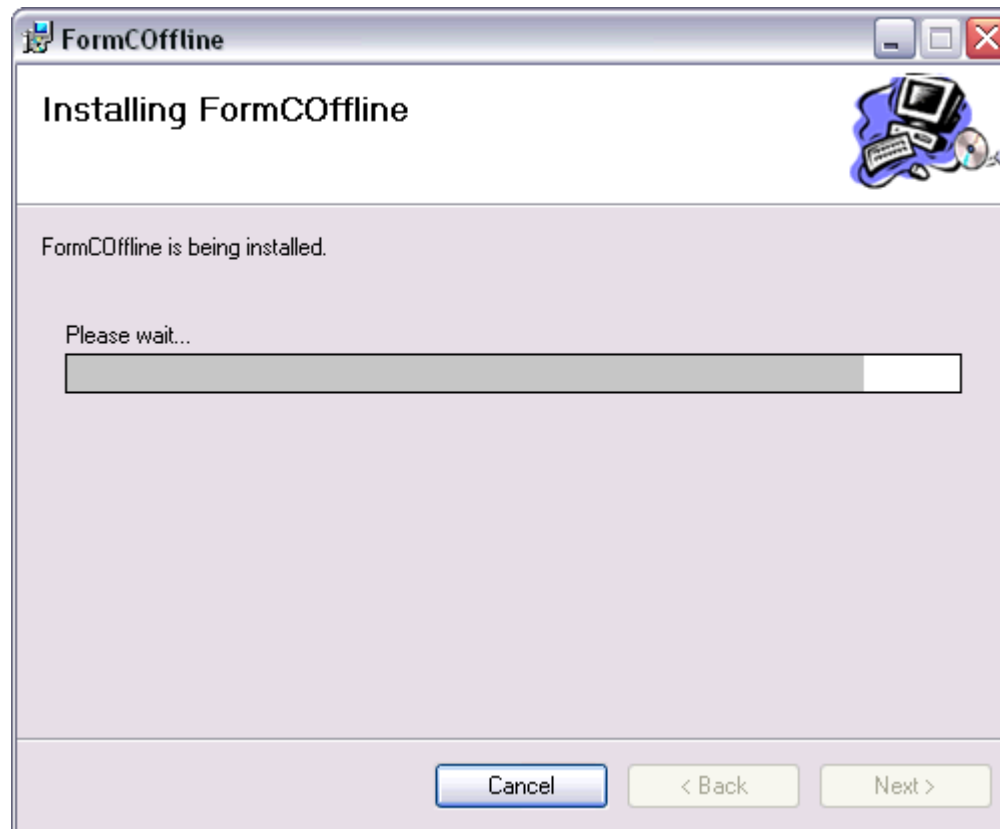
# Install Offline Application



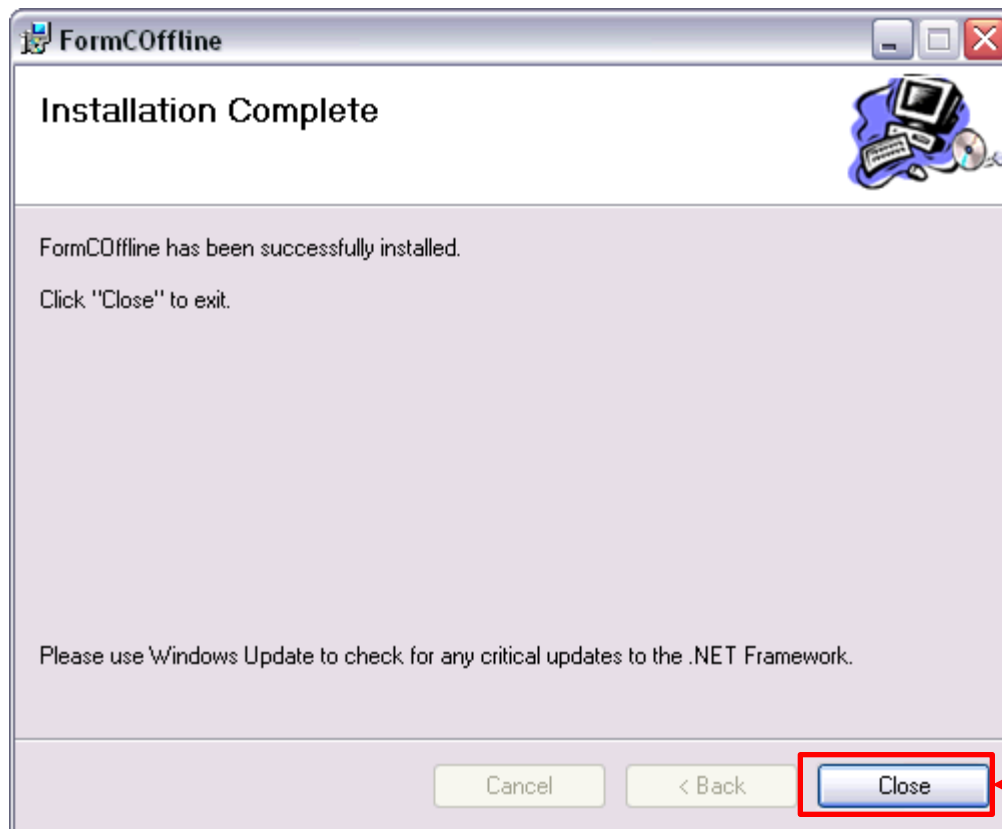
Click <Next>

# Install Offline Application

Please wait for the downloading to complete.

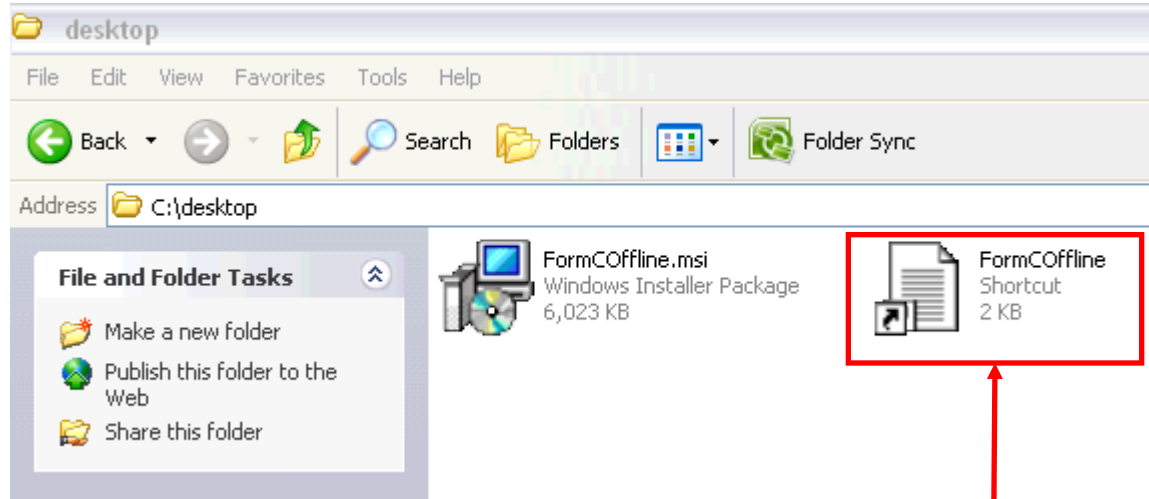


# Install Offline Application



Click <Close>

# Install Offline Application



Double click on <FormCOOffline>


# Offline Application

Please read the welcome page

MainForm

File

## Welcome to IRAS Offline Form C for Year of Assessment 2008

This filing may take you 30 to 45 minutes to complete. To guide you through the process, you can click on the  icon found throughout the form and refer to the User Guide and [FAQs](#)

**Please get ready the following information to complete the filing:-**

- 1) Audited / Unaudited Accounts** (in CSV, PDF, TXT, or XML format)  
You are required to attach the accounts at Section 2 of the Form C Filing menu. This is not applicable to companies that have filed the full set of financial accounts with ACRA in XBRL format.
- 2) Detailed Profit and Loss Statement**  
You are required to attach a copy of the Detailed Profit and Loss Statements via the "Other Attachments" at Section 2 of the Form C Filing Menu, even if the accounts had been filed with ACRA in XBRL format.
- 3) Tax Computation**  
You can attach your own tax computation with supporting schedules or make use of IRAS Tax Computation Templates for trading or investment holding companies.  
  
If you are using the *IRAS Tax Computation Templates* please take note of the following:-
  - a) you should complete the IRAS Tax Computation Templates before completing the Form C, so that the figures would be extracted and auto-included into the Form C Template. Any subsequent adjustment to the figures must be made from IRAS Tax Computation Template instead of Form C.
  - b) if the prescribed rows provided in IRAS Tax Computation Template is insufficient, you only need to enter the total value in the relevant box of the IRAS Tax Computation Template. Furnish the relevant details in separate statements and attach the statements via the "Other Attachments" at Section 2 of the Form C Filing Menu.
  - c) If your balancing charge exceeds your current year capital allowance claim, please do not use the IRAS Tax Computation Templates. Please attach your own tax computation instead.

**Important points to note**

# Offline Application

**MainForm**

File

If you are using the *IRAS Tax Computation Templates* please take note of the following:-

- you should complete the IRAS Tax Computation Templates before completing the Form C, so that the figures would be extracted and auto-included into the Form C Template. Any subsequent adjustment to the figures must be made from IRAS Tax Computation Template instead of Form C.
- if the prescribed rows provided in IRAS Tax Computation Template is insufficient, you only need to enter the total value in the relevant box of the IRAS Tax Computation Template. Furnish the relevant details in separate statements and attach the statements via the "Other Attachments" at Section 2 of the Form C Filing Menu.
- If your balancing charge exceeds your current year capital allowance claim, please do not use the IRAS Tax Computation Templates. Please attach your own tax computation instead.

**Important points to note**

- Receipts/vouchers for Donations, Dividends, Interest and Trust Distribution**  
You are not required to submit any receipt or voucher until IRAS requests for them.
- "Save as Draft" facility**  
If you are not able to complete your filing at one session, please save the return as "draft".
- Submission of Completed Form C Template to IRAS**  
After you have completed the Form C Template, the staff of the company / tax agent who has been duly authorised as the Approver can click on 'Upload' at the Form C Filing Menu to submit the completed Form C Template to IRAS.

To begin filing >> click [Form C Offline Filing](#)

[Quit](#)

Last Updated: 21/07/2008 15:29:18

Click on <Form C Offline Filing> to Begin

# Offline Application

**MainForm**

File

**Form C Filing Menu**

\*Name of Organisation :

\*Tax Reference No : ROC

\*Year of Assessment : 2008

\*Basis Period ⓘ : 01/01/2007  to 31/12/2007

New start-up companies claiming for tax exemption ⓘ  Yes  No

First Year of Assessment upon incorporation

This template must be submitted by 30th November 2008

**Note :**

1. If you are using IRAS Tax Computation Template provided in Section 1, please complete the Tax Computation Template before completing Form C as the calculated figures will be populated into the relevant fields in Form C.
2. Select and complete the required forms and schedules in Sections 1 and 2. Section 1 **MUST** be completed in order to be able to submit Form C in Section 3.

**Section 1. Compulsory Items**

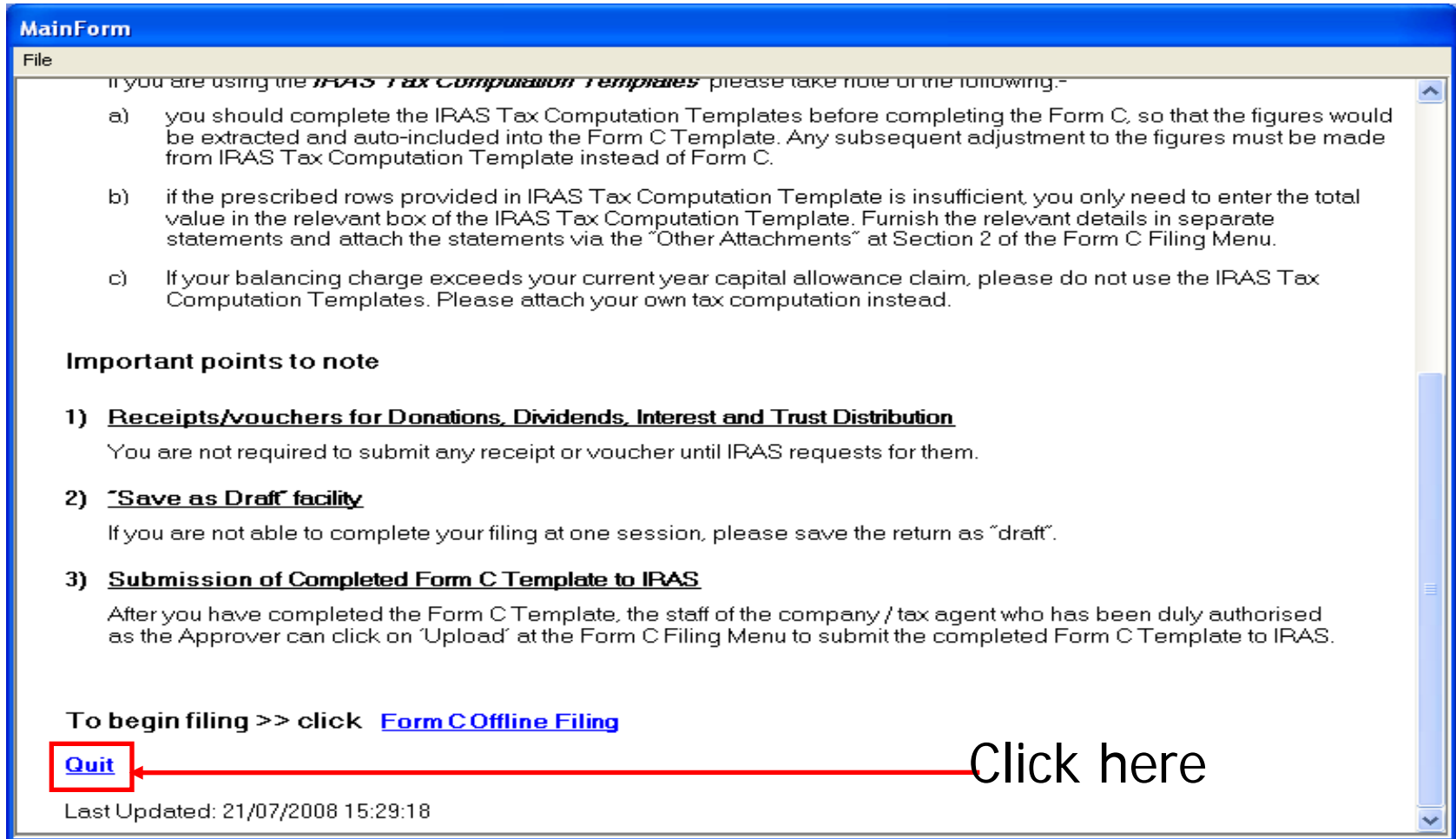
Description	Type	Status
<a href="#">Tax Computation Templates</a>		

# Contents

1. [Download Microsoft Framework Version 1.1](#)
2. [Download Offline Application](#)
3. [Install Offline Application](#)
4. [Backup Storage file](#)
5. [Uninstall/Re-install the Offline Application](#)

# Backup Storage File

- Ensure the Offline Application is closed.



**MainForm**

File

If you are using the *IRAS Tax Computation Templates* please take note of the following:-

- a) you should complete the IRAS Tax Computation Templates before completing the Form C, so that the figures would be extracted and auto-included into the Form C Template. Any subsequent adjustment to the figures must be made from IRAS Tax Computation Template instead of Form C.
- b) if the prescribed rows provided in IRAS Tax Computation Template is insufficient, you only need to enter the total value in the relevant box of the IRAS Tax Computation Template. Furnish the relevant details in separate statements and attach the statements via the "Other Attachments" at Section 2 of the Form C Filing Menu.
- c) If your balancing charge exceeds your current year capital allowance claim, please do not use the IRAS Tax Computation Templates. Please attach your own tax computation instead.

**Important points to note**

- 1) Receipts/vouchers for Donations, Dividends, Interest and Trust Distribution**  
You are not required to submit any receipt or voucher until IRAS requests for them.
- 2) "Save as Draft" facility**  
If you are not able to complete your filing at one session, please save the return as "draft".
- 3) Submission of Completed Form C Template to IRAS**  
After you have completed the Form C Template, the staff of the company / tax agent who has been duly authorised as the Approver can click on 'Upload' at the Form C Filing Menu to submit the completed Form C Template to IRAS.

To begin filing >> click [Form C Offline Filing](#)

**Quit** ← Click here

Last Updated: 21/07/2008 15:29:18

# Backup Storage File

- ❑ Go to the location of the existing version of Offline Application
- ❑ By default the location is at “C:\Program Files\FormCOOffline”

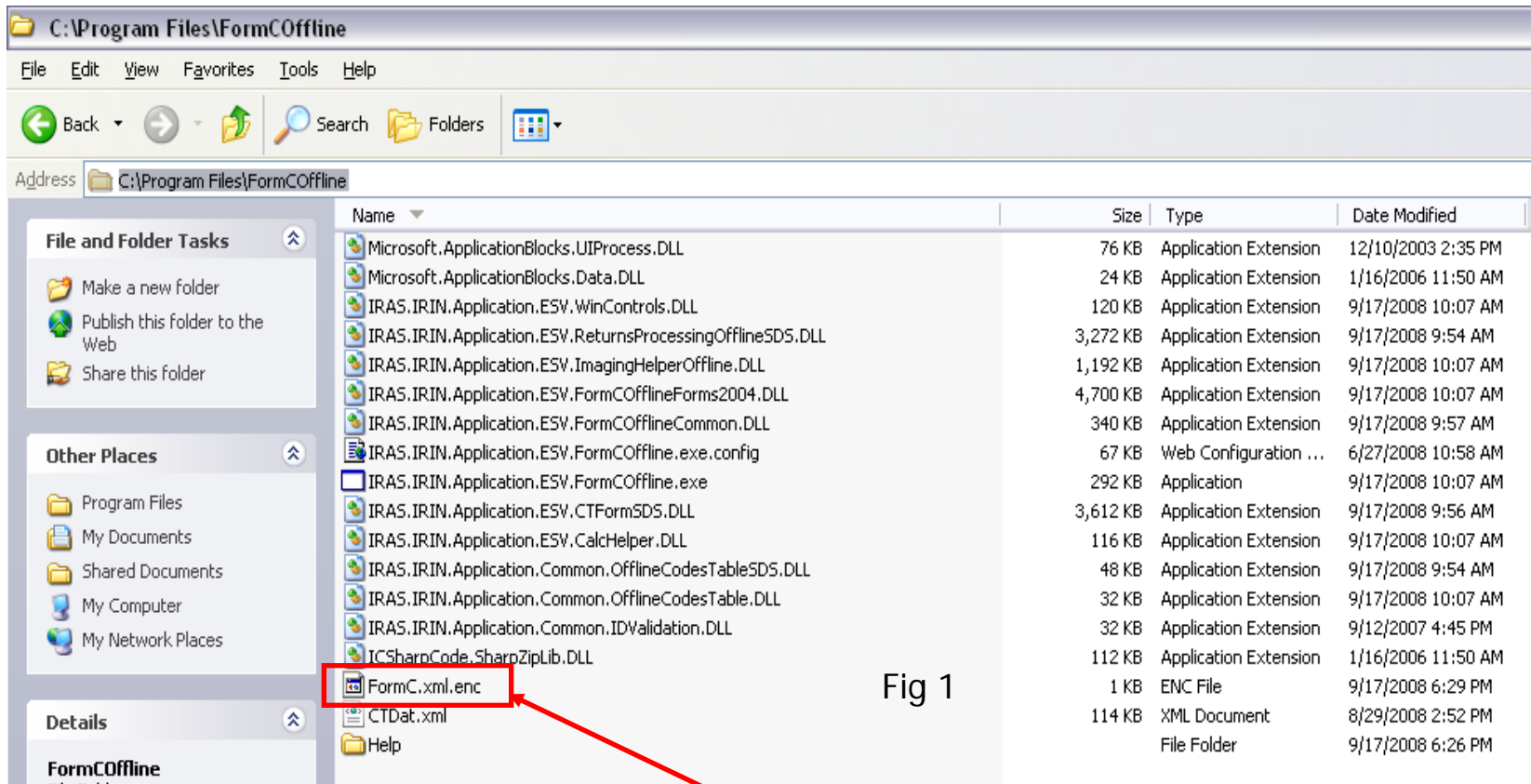


Fig 1

- ❑ Copy “FormC.xml.enc” as seen in Fig 1 above

# Backup Storage File

- Paste “FormC.xml.enc” into another directory, e.g. C:\Backup\ as shown in Fig 2 below

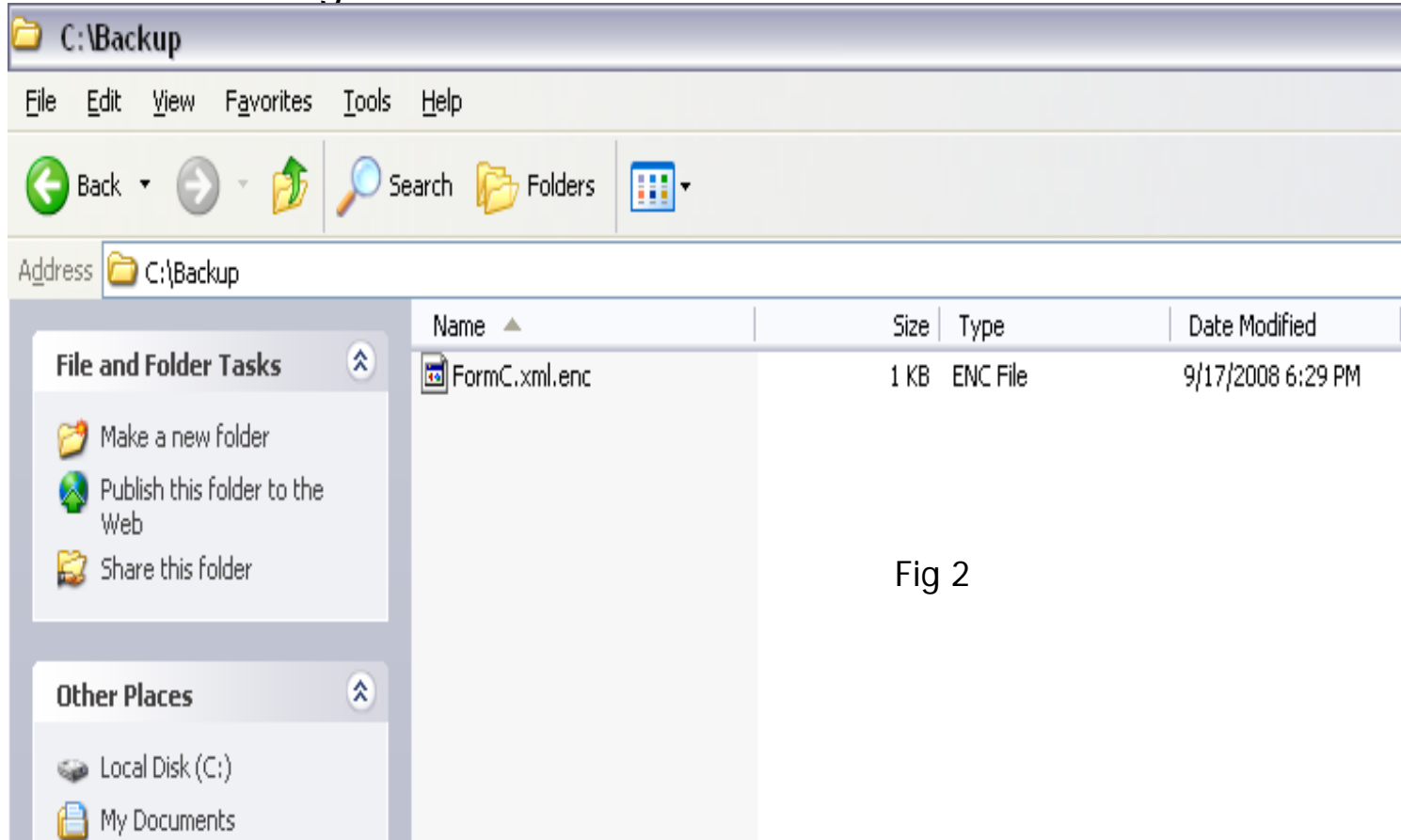


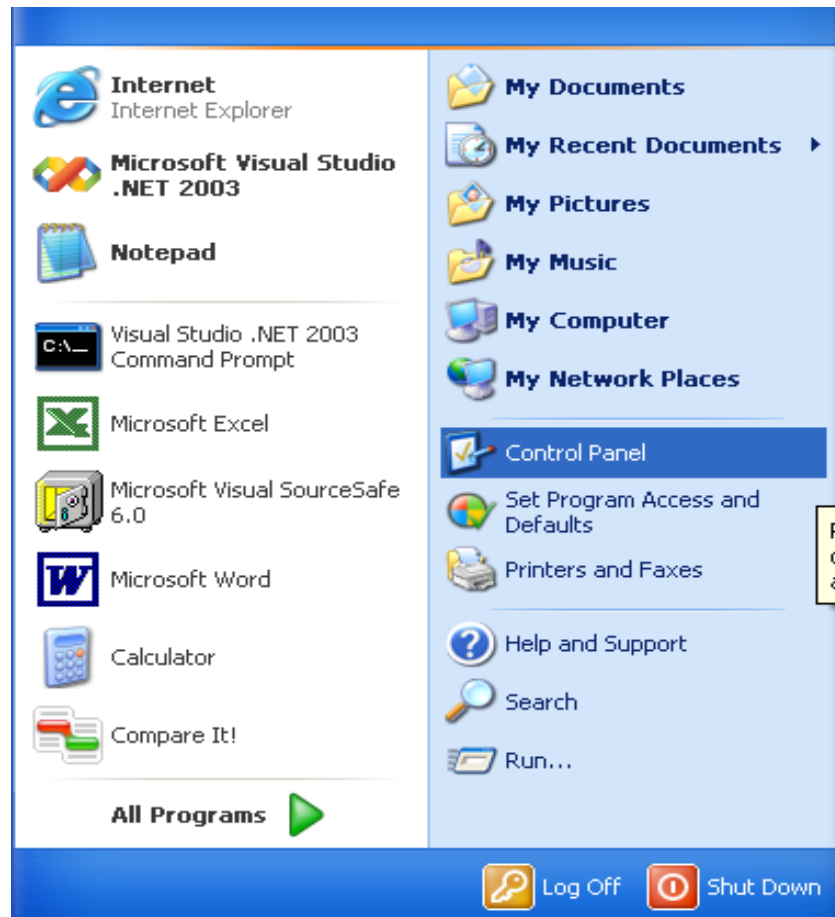
Fig 2

# Content

1. [Download Microsoft Framework Version 1.1](#)
2. [Download Offline Application](#)
3. [Install Offline Application](#)
4. [Backup Storage file](#)
5. [Uninstall/Re-install the Offline Application](#)

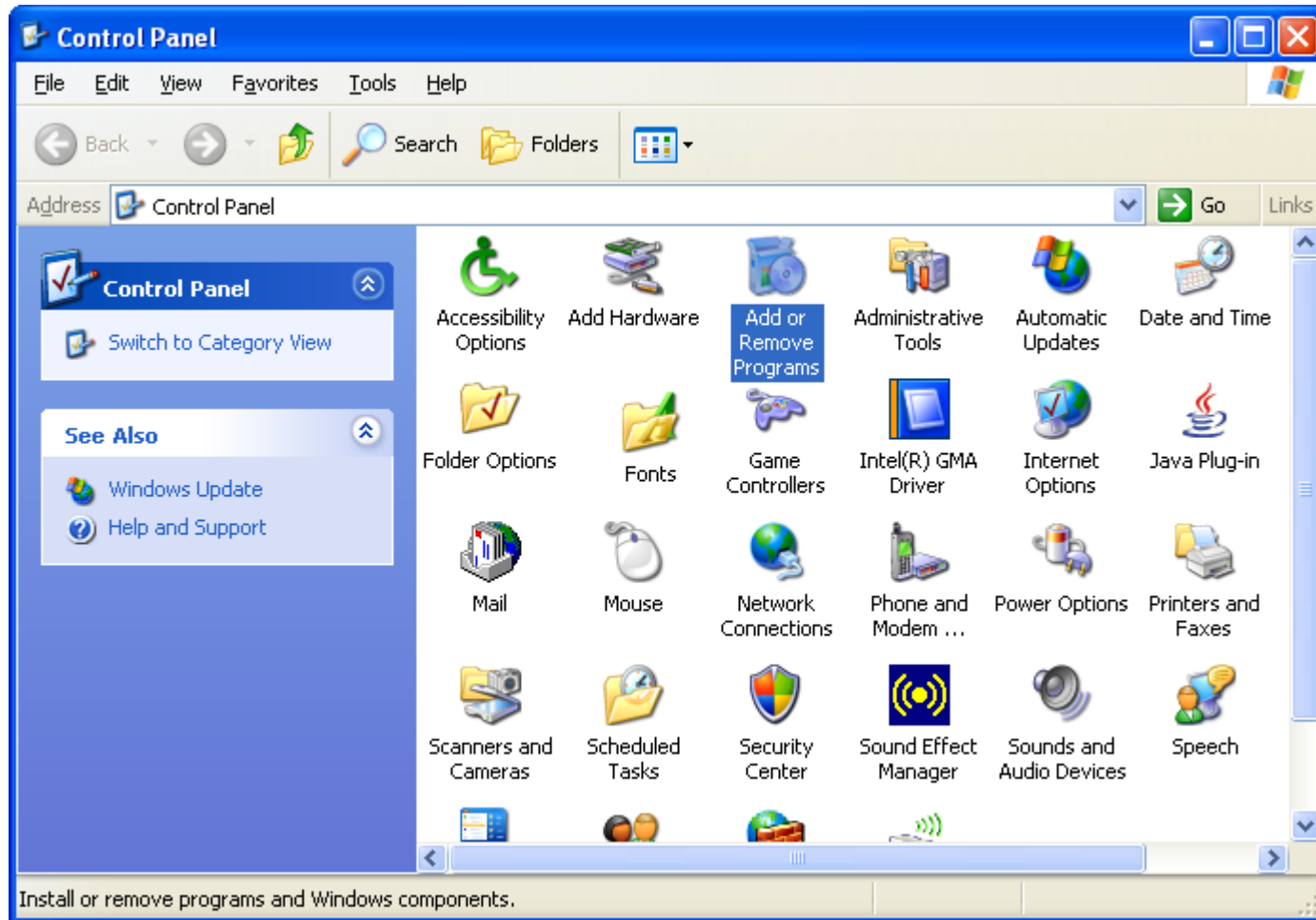
# Uninstall/Re-install the Offline Application

- Click Start > Control Panel



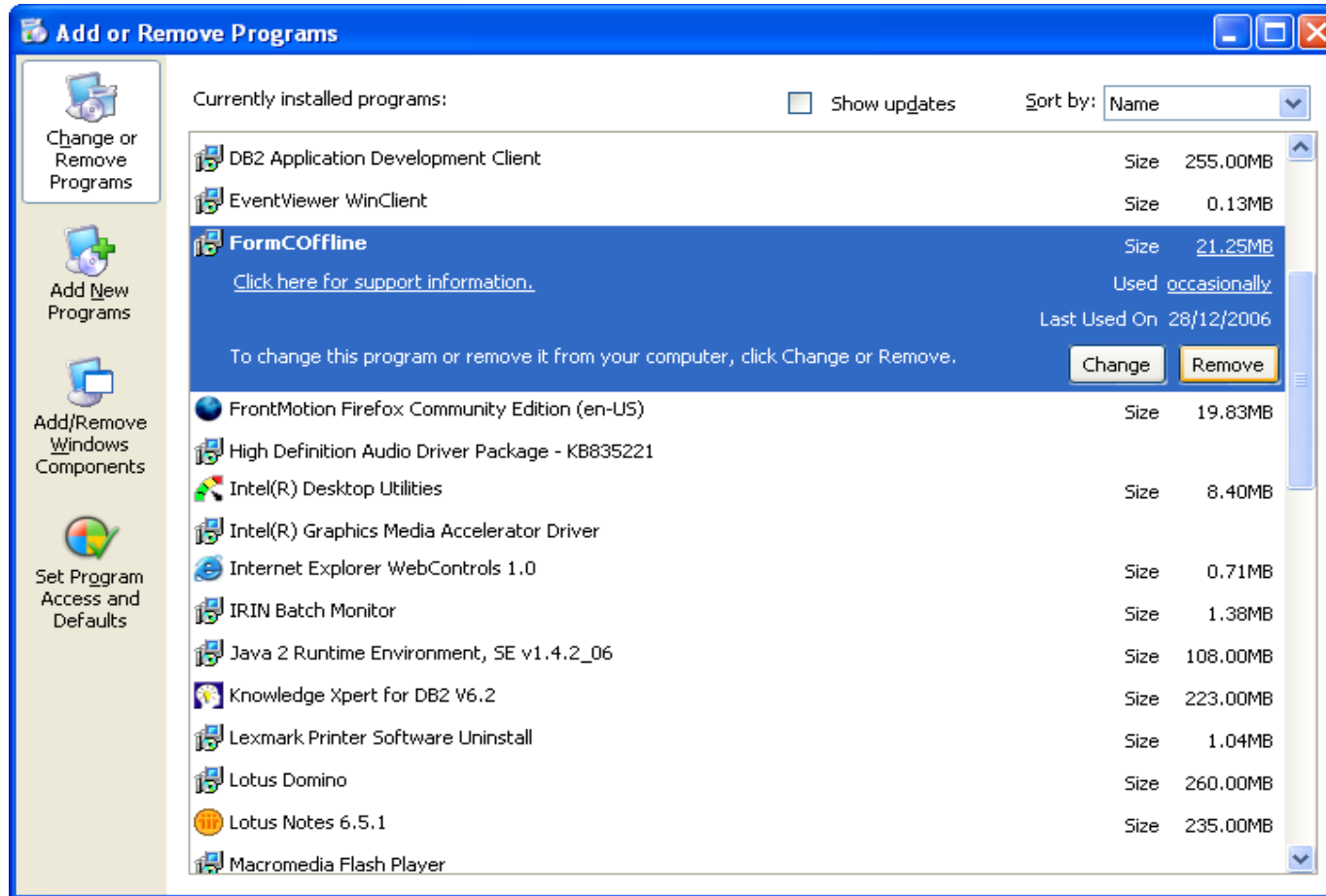
# Uninstall/Re-install the Offline Application

- Double click on *Add or Remove Programs* icon.



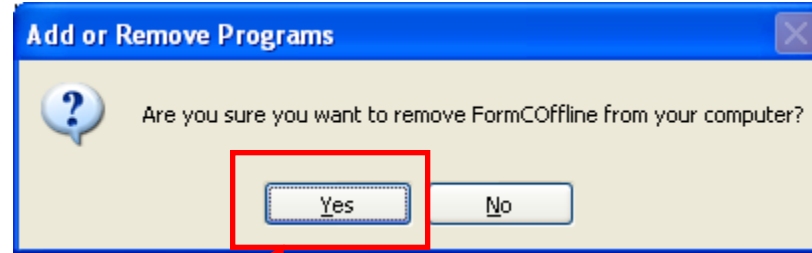
# Uninstall/Re-install the Offline Application

- ❑ Select *FormCOOffline* and click on Remove



# Uninstall/Re-install the Offline Application

- Click “Yes” to finish the uninstallation.

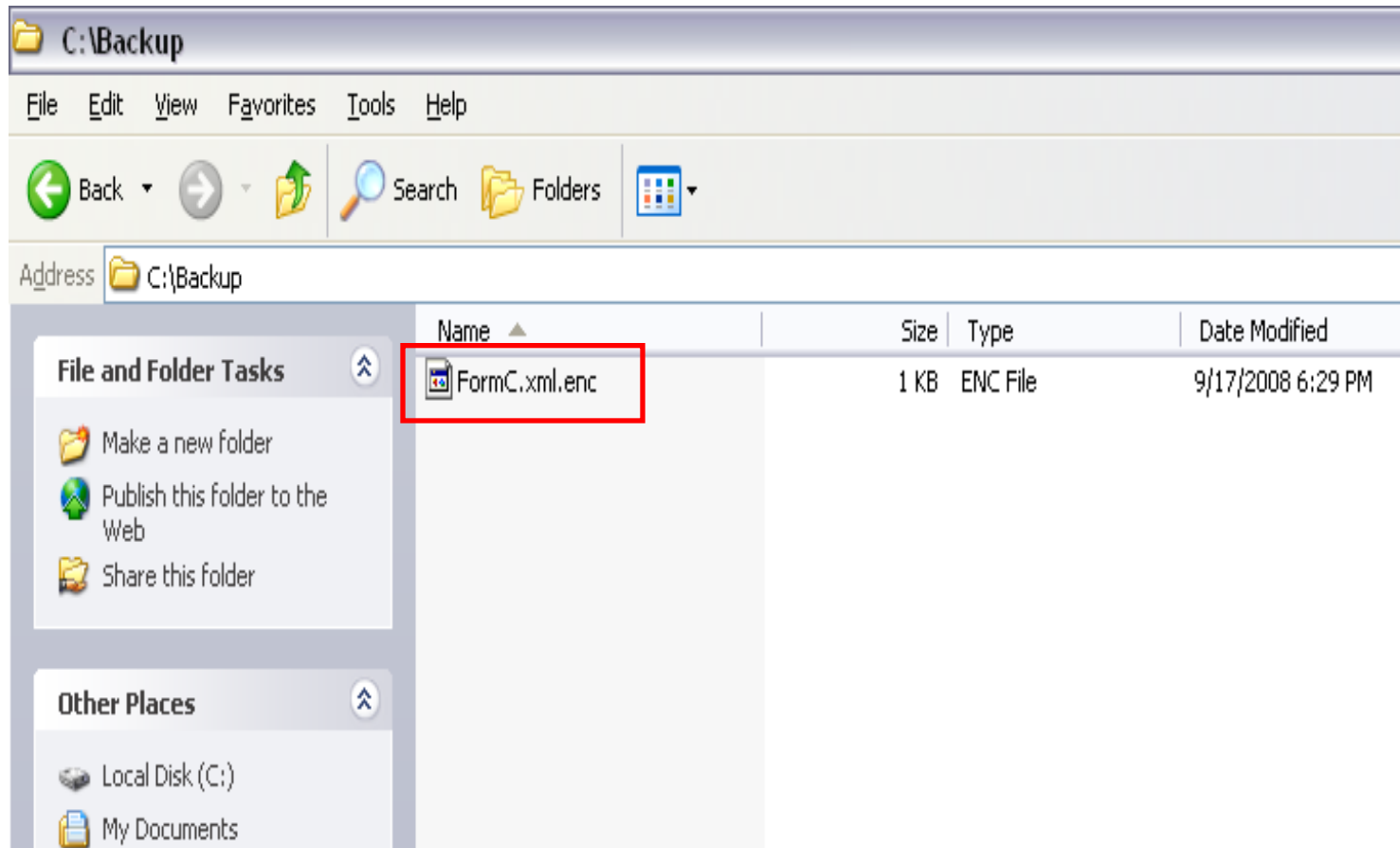


Click Yes

- Refer to slide no. 24 to 29 to re-install the new version of the Offline Application

# Uninstall/Re-install the Offline Application

- Copy “FormC.xml.enc” from the backup folder C:\Backup



# Uninstall/Re-install the Offline Application

- Paste the “FormC.xml.enc” into the folder at “C:\Program Files\FormCOOffline”

The screenshot shows a Windows Explorer window titled "C:\Program Files\FormCOOffline". The address bar shows the path "C:\Program Files\FormCOOffline". The file list is as follows:

Name	Size	Type	Date Modified
Microsoft.ApplicationBlocks.UIProcess.DLL	76 KB	Application Extension	12/10/2003 2:35 PM
Microsoft.ApplicationBlocks.Data.DLL	24 KB	Application Extension	1/16/2006 11:50 AM
IRAS.IRIN.Application.ESV.WinControls.DLL	120 KB	Application Extension	9/17/2008 10:07 AM
IRAS.IRIN.Application.ESV>ReturnsProcessingOfflineSDS.DLL	3,272 KB	Application Extension	9/17/2008 9:54 AM
IRAS.IRIN.Application.ESV.ImagingHelperOffline.DLL	1,192 KB	Application Extension	9/17/2008 10:07 AM
IRAS.IRIN.Application.ESV.FormCOOfflineForms2004.DLL	4,700 KB	Application Extension	9/17/2008 10:07 AM
IRAS.IRIN.Application.ESV.FormCOOfflineCommon.DLL	340 KB	Application Extension	9/17/2008 9:57 AM
IRAS.IRIN.Application.ESV.FormCOOffline.exe.config	67 KB	Web Configuration ...	6/27/2008 10:58 AM
IRAS.IRIN.Application.ESV.FormCOOffline.exe	292 KB	Application	9/17/2008 10:07 AM
IRAS.IRIN.Application.ESV.CTFormSDS.DLL	3,612 KB	Application Extension	9/17/2008 9:56 AM
IRAS.IRIN.Application.ESV.CalcHelper.DLL	116 KB	Application Extension	9/17/2008 10:07 AM
IRAS.IRIN.Application.Common.OfflineCodesTableSDS.DLL	48 KB	Application Extension	9/17/2008 9:54 AM
IRAS.IRIN.Application.Common.OfflineCodesTable.DLL	32 KB	Application Extension	9/17/2008 10:07 AM
IRAS.IRIN.Application.Common.IDValidation.DLL	32 KB	Application Extension	9/12/2007 4:45 PM
ICSharpCode.SharpZipLib.DLL	112 KB	Application Extension	1/16/2006 11:50 AM
FormC.xml.enc	1 KB	ENC File	9/17/2008 6:29 PM
CTDat.xml	114 KB	XML Document	8/29/2008 2:52 PM
Help		File Folder	9/17/2008 6:26 PM

# Uninstall/Re-install the Offline Application

Overwrite the file and choose “Yes”. As shown in Fig 3

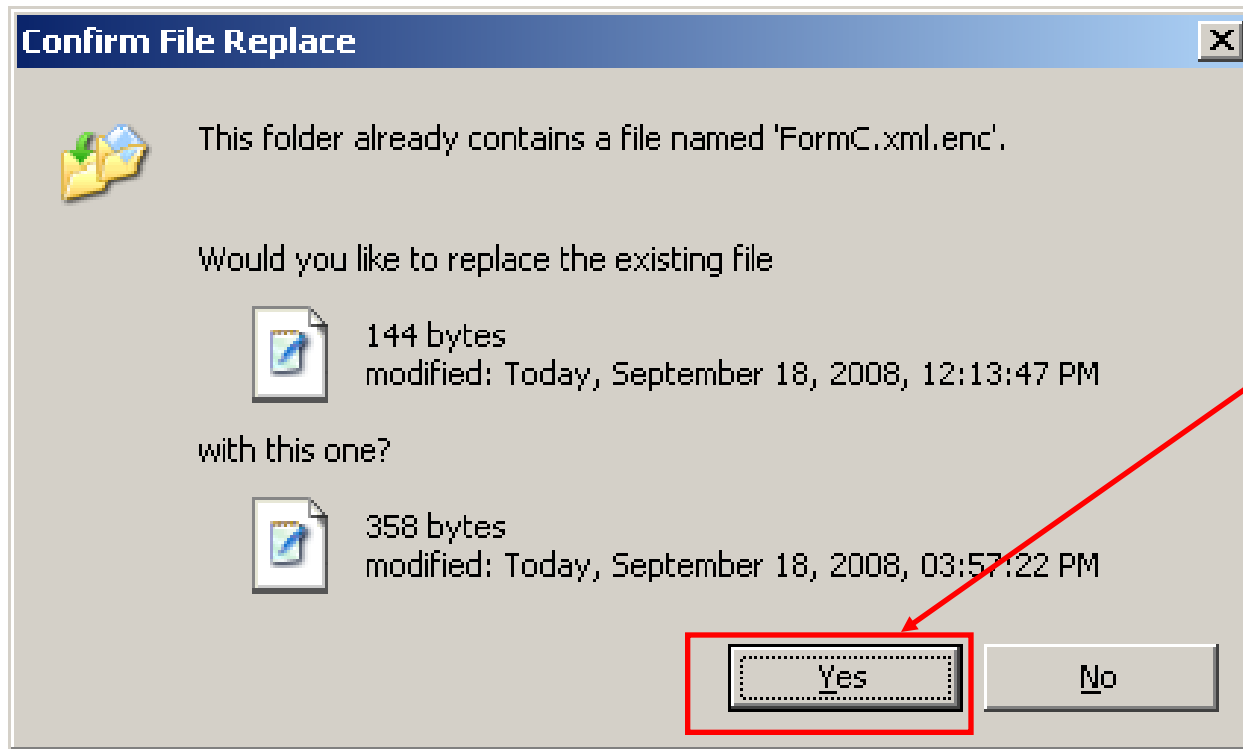


Fig 3

- You have successfully backed up your Form C data and will be able to view them in the new version of the Offline Application.