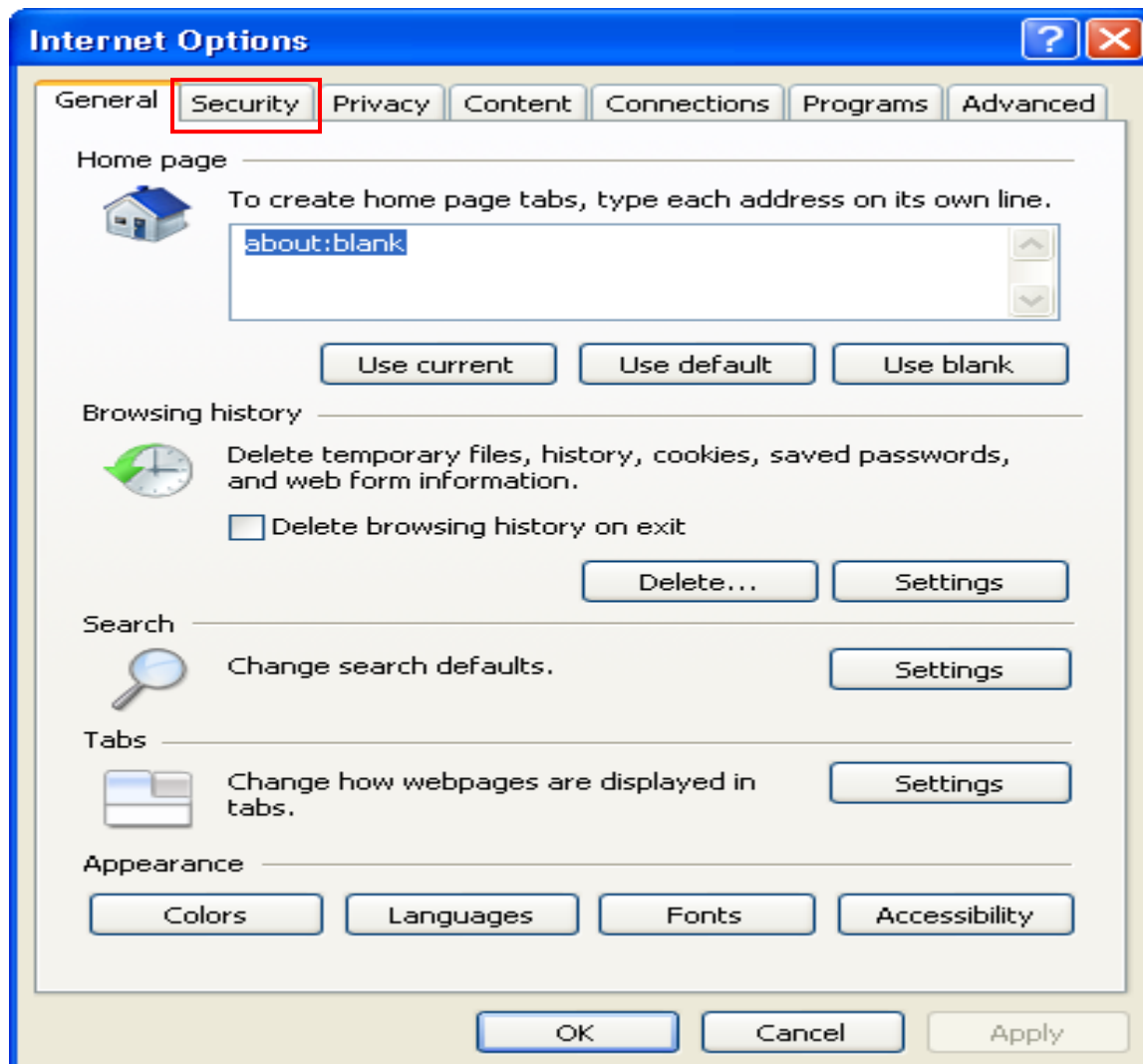
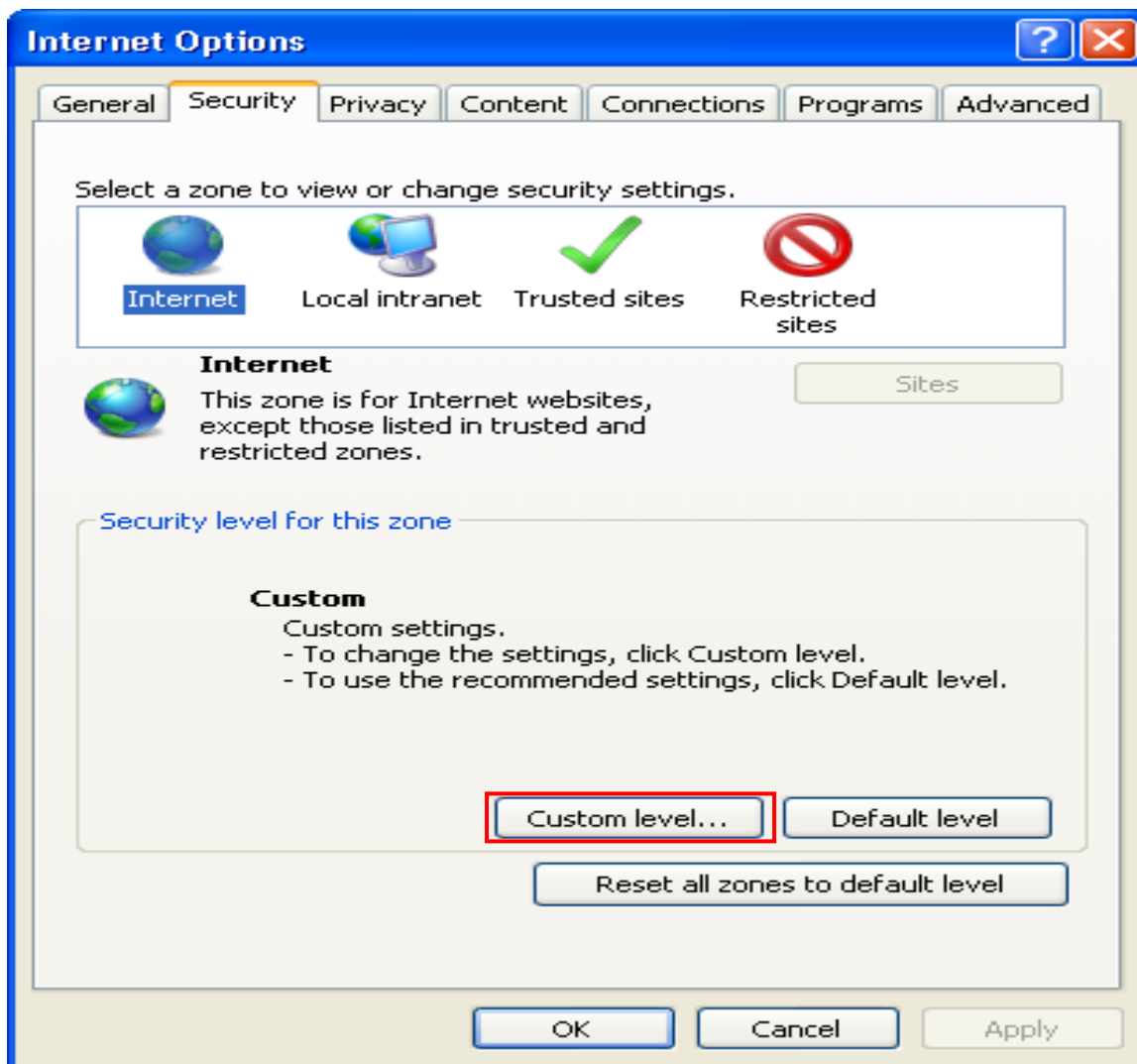


Internet Settings for Internet Explorer (IE) 8

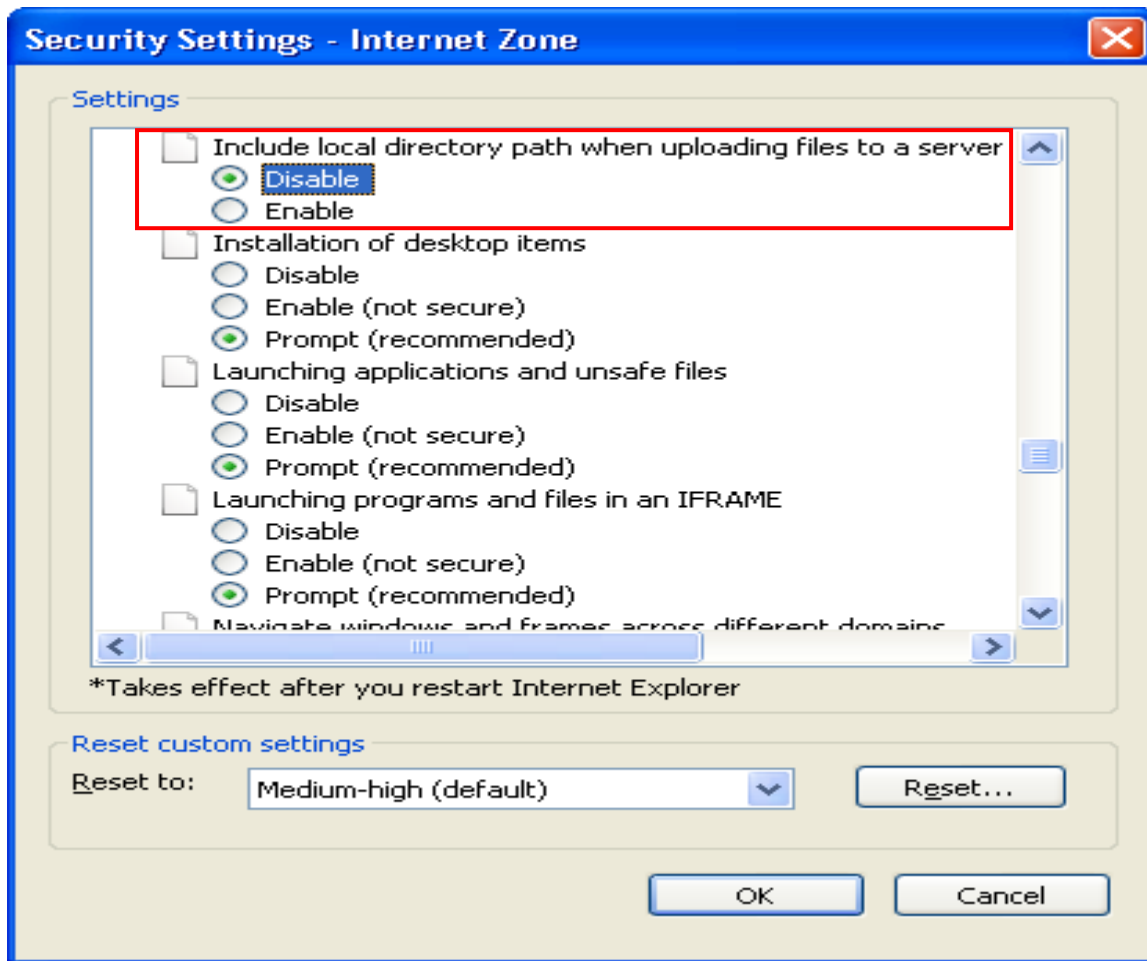
1. Go to <Internet Options>, <Tools> from Internet Explorer & click on <Security> tab.



2. Click <Custom level>.



3. Scroll down to <Miscellaneous> "Include local directory path when uploading files to a server". The default value in IE8 is "Disable".



4. Change the value to <Enable> and click <OK> to apply the change.

