

Java Setup Quick Start Guide

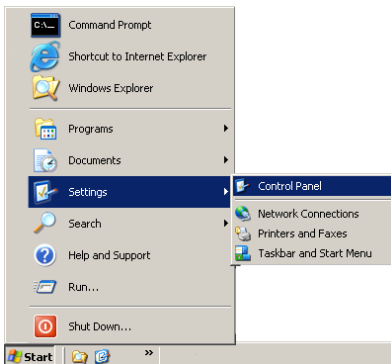
The Java Runtime Environment (JRE) is a pre-requisite environment for both the Validation and Submission Application and the Offline Application. The JRE can be downloaded from the Java website for free.

Quick Start

Check the computer settings for JRE

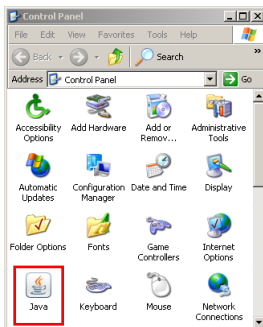
Check if your computer has JRE installed

1. Click on Start > Settings > Control Panel.



2. Look for the 'Java' icon. If you are unable to locate the 'Java' icon, it means that your computer does not have JRE installed. Please proceed to download the latest JRE.

3. Else, double click on the 'Java' icon.



4. Click **About...**. The number indicated by the red arrow is the JRE version number. Your computer satisfies the pre-requisite if this number is 6 or above. Click 'Close' to exit.



5. If your computer has been installed with a lower JRE version, please proceed to download the latest JRE.

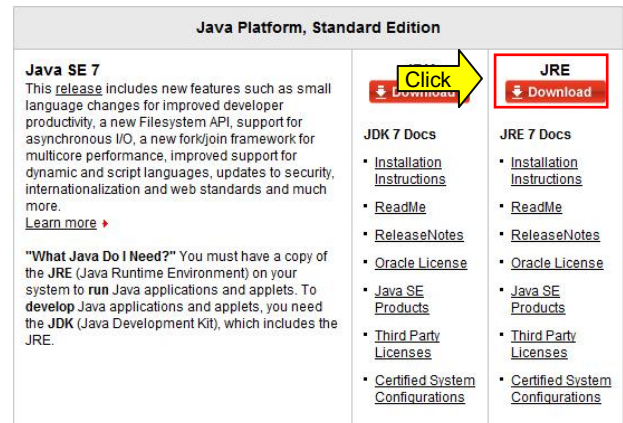
Download and install the latest JRE

Download the latest JRE

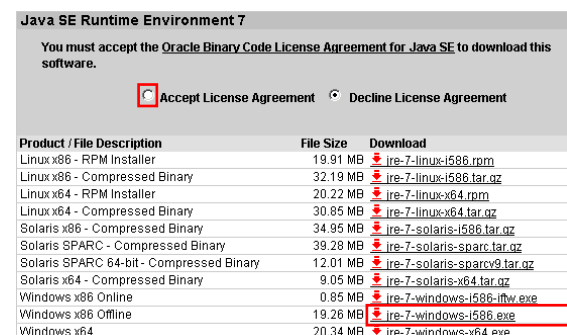
1. At IRAS website www.iras.gov.sg > choose e-Services (from Quicklinks) > Offline Application OR Validation and Submission Application (under e-Submission).
2. Click on 'Java Runtime Environment Version 6 and above' to download or upgrade for any higher update versions.

Recommended hardware/software requirement	<ul style="list-style-type: none">• Operating system Windows 2000, Windows XP and Windows Vista Java Runtime Environment Version 6 and above• Hardware requirements Pentium 4 PC and above with 1 GB RAM (recommended 2GB RAM) 512Kbps speed Broadband with connection to a local ISP• Browser Internet Explorer 5.5 and above or Mozilla FireFox 1.0 and above
--	---

3. You will be directed to download 'Java Runtime Environment (JRE) Java SE7'.



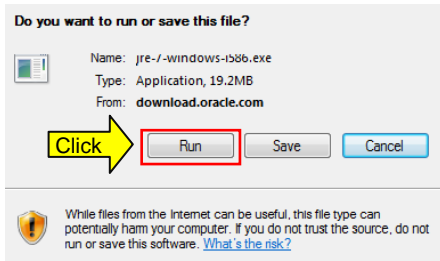
4. Check on 'Accept License Agreement' and select 'Windows x86 Offline'.



Product / File Description	File Size	Download
Linux x86 - RPM Installer	19.91 MB	ire-7-linux-i586.rpm
Linux x86 - Compressed Binary	32.19 MB	ire-7-linux-i586.tar.gz
Linux x64 - RPM Installer	20.22 MB	ire-7-linux-x64.rpm
Linux x64 - Compressed Binary	30.85 MB	ire-7-linux-x64.tar.gz
Solaris x86 - Compressed Binary	34.95 MB	ire-7-solaris-i586.tar.gz
Solaris SPARC - Compressed Binary	39.28 MB	ire-7-solaris-sparc.tar.gz
Solaris SPARC 64-bit - Compressed Binary	12.01 MB	ire-7-solaris-sparcv9.tar.gz
Solaris x64 - Compressed Binary	9.05 MB	ire-7-solaris-x64.tar.gz
Windows x86 Online	0.85 MB	ire-7-windows-i586-rtw.exe
Windows x86 Offline	19.26 MB	ire-7-windows-i586.exe
Windows x64	20.34 MB	ire-7-windows-x64.exe

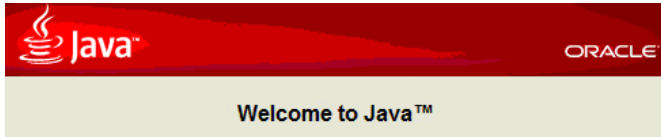
Download and install the latest JRE (Cont'd)

5. A pop up message will appear. Click 'Run'.



Install the latest JRE

1. At the welcome page, click 'Install' to begin installation.



Java provides safe and secure access to the world of amazing Java content. From business solutions to helpful utilities and entertainment, Java makes your internet experience come to life.

Note: No personal information is gathered as part of our install process. [Click here](#) for more information on what we do collect.

Click Install to accept the [license agreement](#) and install Java now.



2. A progress bar will appear. Please wait for the installation to complete.



3. Once you have received the message below, the JRE has been successfully installed.



4. Click 'Close' to exit the setup.