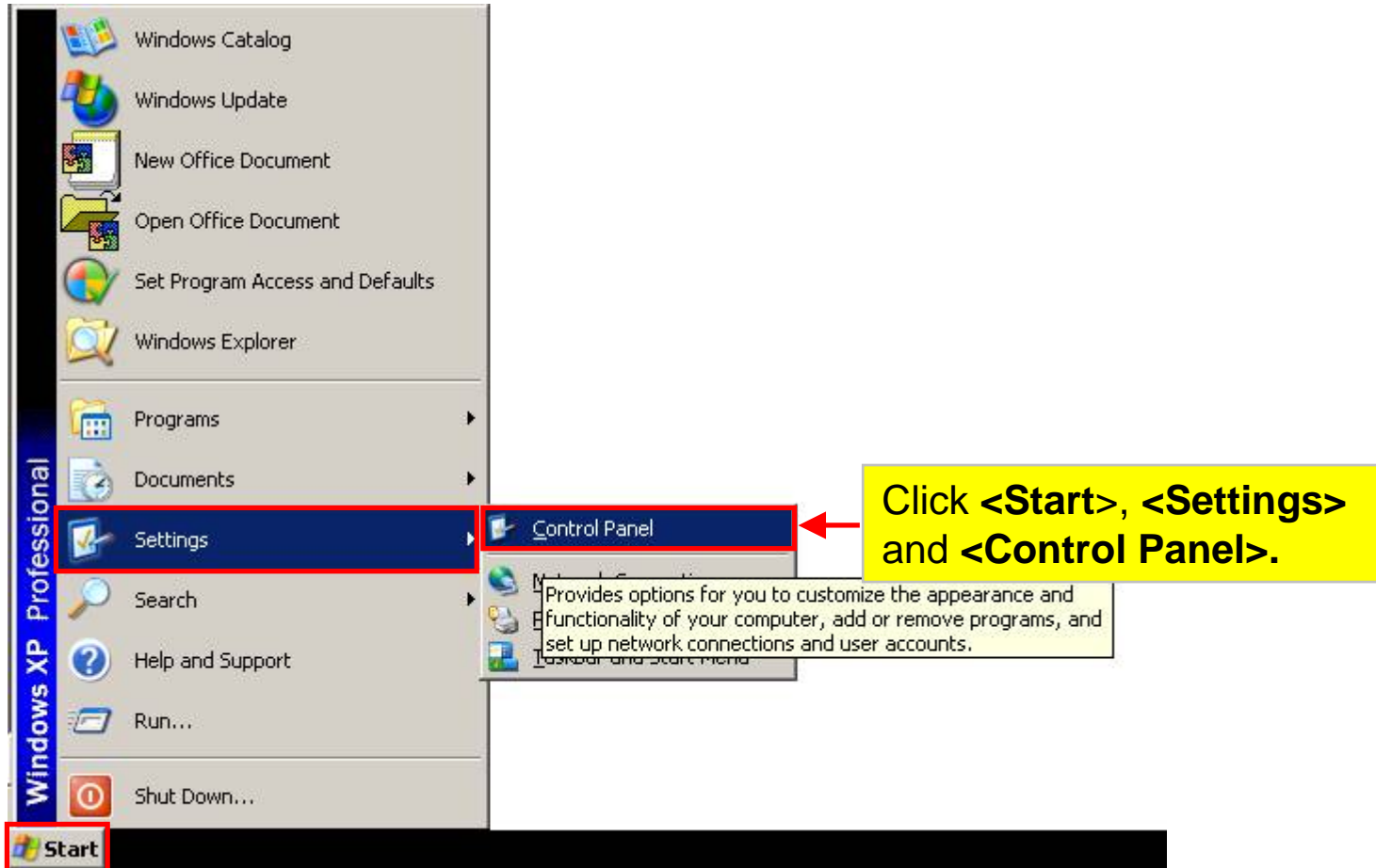


e-Submission of Employment Income -User Guide For Installing Java Runtime Environment

(Version 1.1 - Dec 2008)



Check Java Runtime Environment Version



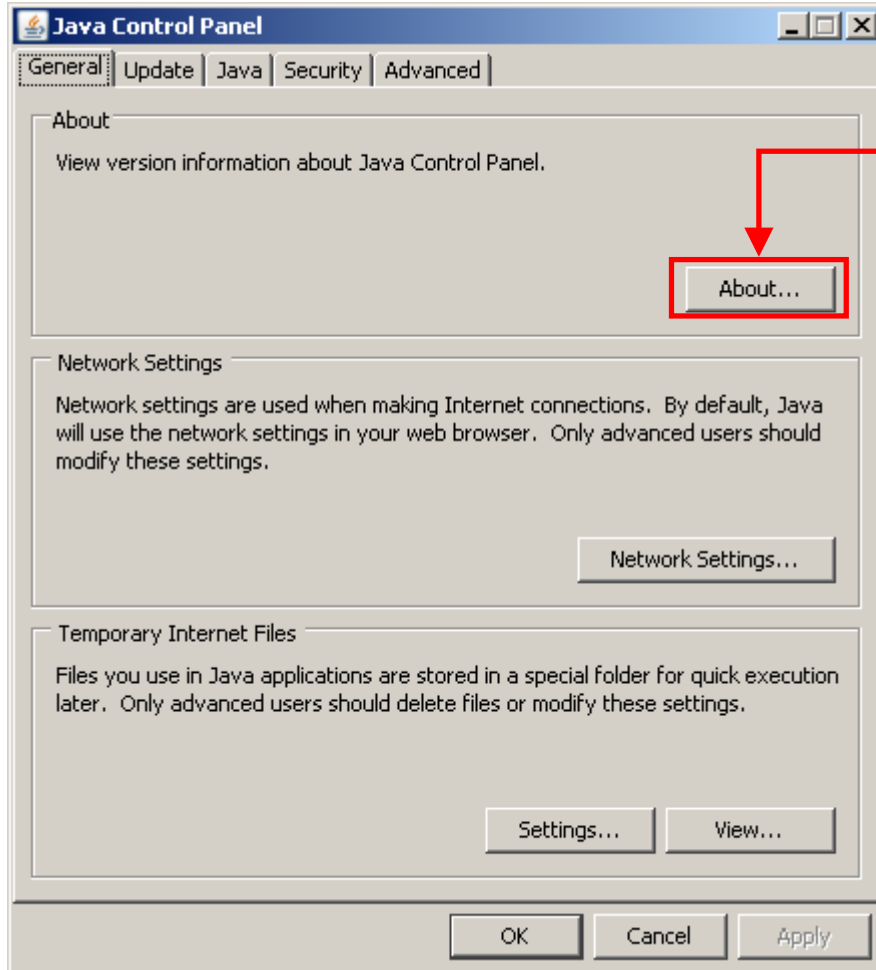
Check Java Runtime Environment Version

The screenshot shows the Windows Control Panel window. The address bar displays 'Control Panel'. On the left sidebar, the 'Control Panel' link is selected, and the 'Switch to Category View' link is highlighted with a red box. A red arrow points from this link to the 'Java' link in the main list of categories. The 'Java' link is also highlighted with a red box. A yellow callout box contains the following text: 'Click <Java> to proceed.' and 'If this is not the view that you see, click <Switch to Classic View>.' The main list of categories includes items like 'Add or Remove Programs', 'Administrative Tools', 'Automatic Updates', 'Display', 'Folder Options', 'Fonts', 'Internet Options', 'Java', 'Keyboard', 'Mouse', 'Network Connections', 'Printers and Faxes', 'ProtectTools Security', 'Realtek HD Sound', 'SAP Configuration', 'Scanners and Cameras', 'Scheduled Tasks', 'Sounds and Audio Devices', 'Speech', 'Taskbar and Navigation', and 'User Accounts'. Each item has a 'Name' and 'Comments' column.

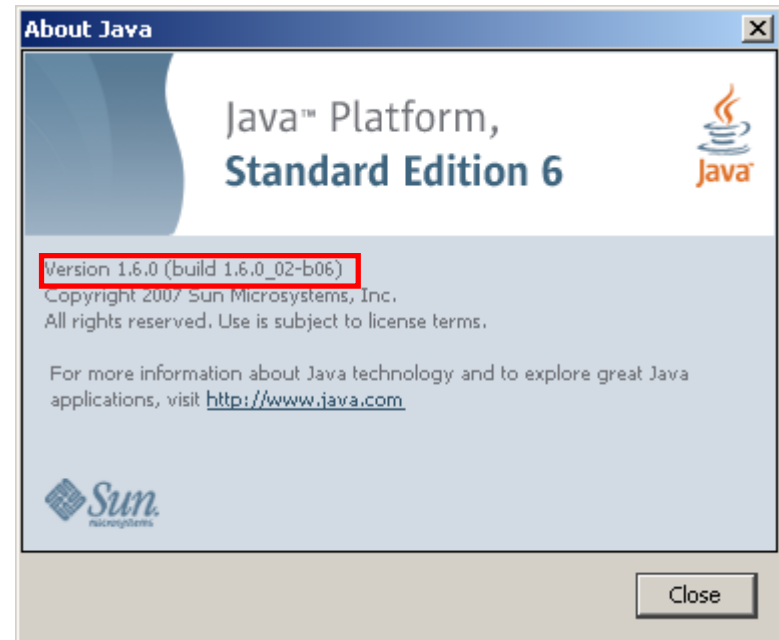
Name	Comments
Add or Remove P...	Install or remove pr...
Administrative Tools	Configure administr...
Automatic Updates	Set up Windows to ...
Display	Change the appear...
Folder Options	Customiz
Fonts	Add, cha
Internet Options	Configur
Java	Java(TM)
Keyboard	Customiz
Mouse	Customiz
Network Connect...	Connect
Printers and Faxes	Shows installed prin...
ProtectTools Sec...	Manages HP Protec...
Realtek HD Soun...	Realtek HD Audio C...
SAP Configuration	SAP Visual Design S...
Scanners and Ca...	Add, remove, and c...
Scheduled Tasks	Schedule computer ...
Sounds and Audi...	Change the sound s...
Speech	Change settings for...
Taskbar and Star...	Customize the Start...
User Accounts	Change user accou...

Check Java Runtime Environment Version

Proceed to the next step if your Java Version is not version 1.6.0.



Click **<About>** to check your Java version.



Download Java Runtime Environment (JRE) 6

Please download Java Runtime Environment (JRE) 6 **Update 3** or above.

Java SE Downloads



It's time

Download the complete platform and runtime environment
» [Get the JDK download](#)

[Overview](#) | [Technologies](#) | [Documentation](#) | [Community](#) | [Support](#) | **[Downloads](#)**

Latest Release | [Next Release \(Early Access\)](#) | [Embedded Use](#) | [Real-Time](#) | [Previous Releases](#)

Confused or having trouble downloading or installing? See the [download help page](#).
» [Supported System Configurations](#)

Java SE Runtime Environment (JRE) 6 Update 11

This release provides a new Java Plug-in that combines features of applet and Java Web Start technologies, a new Direct3D pipeline for Microsoft platforms, an updated documentation bundle, and more.

[Installation Instructions](#) | [Real-World Examples](#) | [Third Party Licenses](#)

» [Download](#)

Click <Download>.

Java SE Development Kit (JDK) 6 Update 11

The Java SE Development Kit (JDK) includes the Java SE Runtime Environment (JRE) and command-line development tools that are useful for developing applets and applications.

» [More info about Java SE 6 Update 11 ...](#)

[FAQ](#) | [Installation Instructions](#) | [ReadMe](#) | [ReleaseNotes](#) | [Sun License](#) | [Third Party Licenses](#)

» [Download](#)

» [Java SE Site Map](#)

Regional Downloads

[Japanese](#)
[日本語版](#)



Java EE SDK
Fuels Efficiency

Related Resources

- » [Java SE for Business](#)
- » [Compatibility](#)
- » [Performance](#)
- » [Security](#)
- » [Mobility](#)
- » [Timezone Updates](#)

Related Downloads

- » [XML and Web Services](#)
- » [Java Media Framework](#)

Popular Topics

- » [JDK 6 Adoption Guide](#)

Download Java Runtime Environment (JRE) 6

Sun microsystems Downloads

SDN Home > Download Center >

Java SE Runtime Environment 6u11

Provide Information, then Continue to Download

There are no 64-bit versions of the Java Plugin, Java Web Start or Java Control Panel; however the 32-bit versions of the JRE can be installed on 64-bit systems in order to obtain this functionality. Note that only 32-bit browsers are supported at this time.

Select Platform and Language for your download:

Platform:

Language:

I agree to the Java SE Runtime Environment 6 with JavaFX License Agreement

Continue »

Getting Started?

- » New to Java Center
- » New to Solaris Center
- » Sun Studio

Download Resources

- » FAQs
- » Download History
- » Sun Download Manager
- » Download Center Customer Service
- » JavaFX
- » Web Developer Resource

NetBeans Simple, Intuitive IDE

1. Select the platform of your computer and make sure the License Agreement is checked.
2. Click **<Continue>**.

Download Java Runtime Environment (JRE) 6

Download Java SE Runtime Environment 6u11 for Windows, Multi-language



 **NetBeans** Simple, Intuitive IDE

Getting Started?

- » [New to Java Center](#)
- » [New to Solaris Center](#)
- » [Sun Studio](#)

Download Resources

- » [FAQs](#)
- » [Download History](#)
- » [Sun Download Manager](#)
- » [Download Center](#)
- » [Customer Service](#)

Related Resources

- » [Java.sun.com](#)
- » [Solaris Developer Center](#)
- » [JavaFX](#)
- » [Web Developer Resource Center](#)
- » [Developer Services](#)

Download Information and Files

Instructions: Select the files you want, then click the "Download Selected with Sun Download Manager" (SDM) button below to automatically install and use SDM ([learn more](#)). Alternately, click directly on file names to download with your browser. (Use of SDM is recommended but not required.)

Required Files

<input checked="" type="checkbox"/> File Description and Name	Size
<input type="checkbox"/> Windows Offline Installation	15.42 MB
jre-6u11-windows-i586-p.exe	

Opt

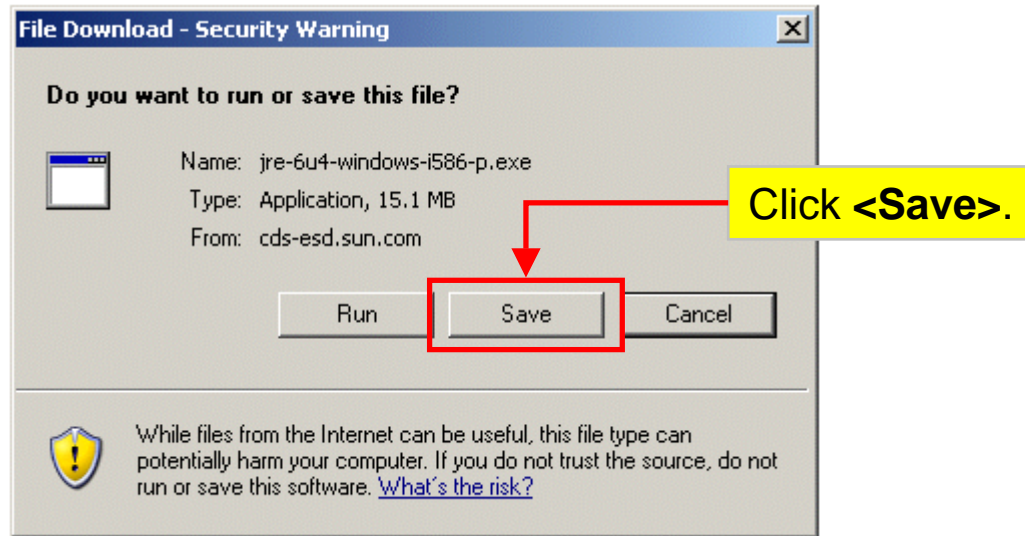
Click the hyperlink under <Windows Offline Installation>.

<input checked="" type="checkbox"/> File Description and Name	Size
<input type="checkbox"/> Windows Kernel Installation	0.20 MB
jre-6u11-windows-i586-p-iftw-k.exe	
<input type="checkbox"/> Windows Online Installation	0.58 MB
jre-6u11-windows-i586-p-iftw.exe	

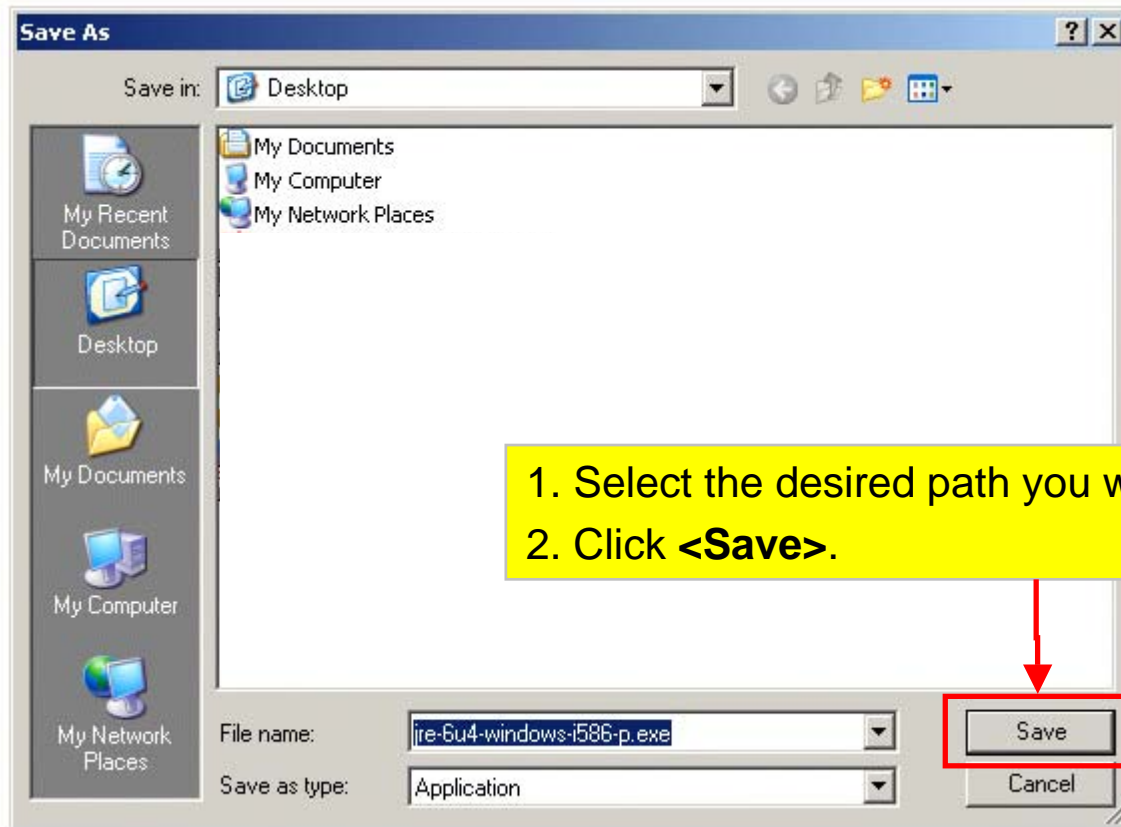
[Download Selected with Sun Download Manager »](#)

Easily manage your downloads (pause, resume, restart, verify). » [Learn more](#)

Download Java Runtime Environment (JRE) 6

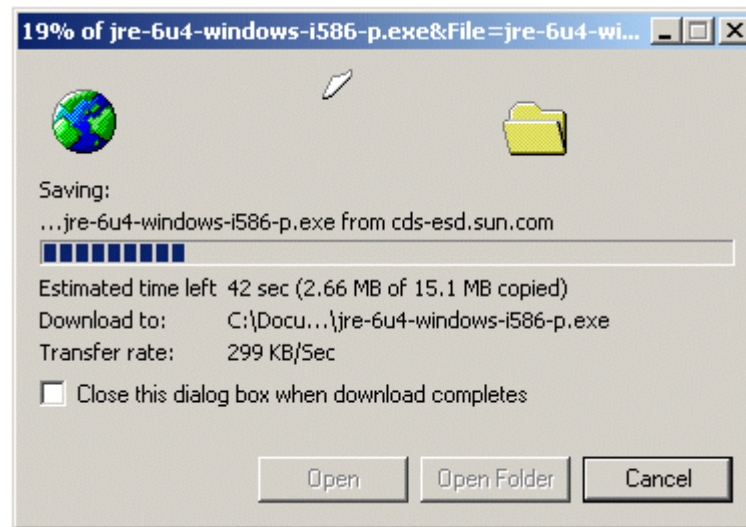


Download Java Runtime Environment (JRE) 6

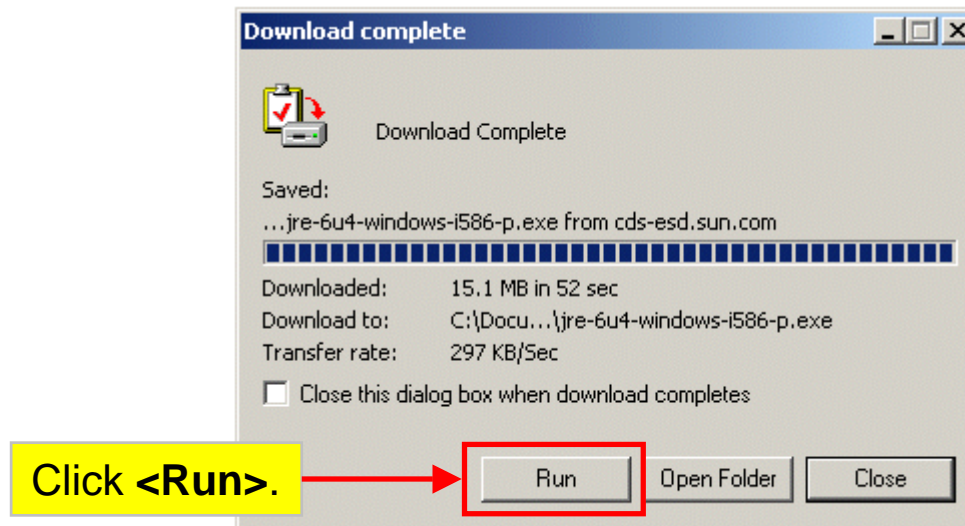


Download Java Runtime Environment (JRE) 6

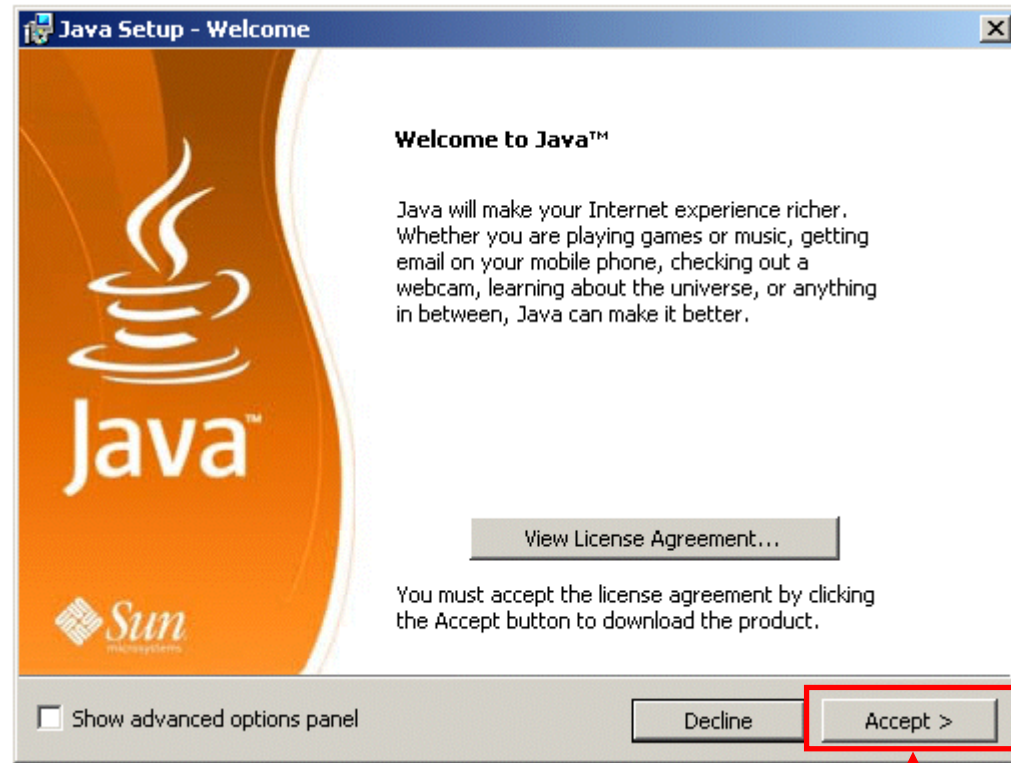
Please wait for the downloading to complete.



Install Java Runtime Environment (JRE) 6



Install Java Runtime Environment (JRE) 6



Click <Accept>.

Install Java Runtime Environment (JRE) 6

Please wait for the installation to complete.



Install Java Runtime Environment (JRE) 6



Click <Finish>.