

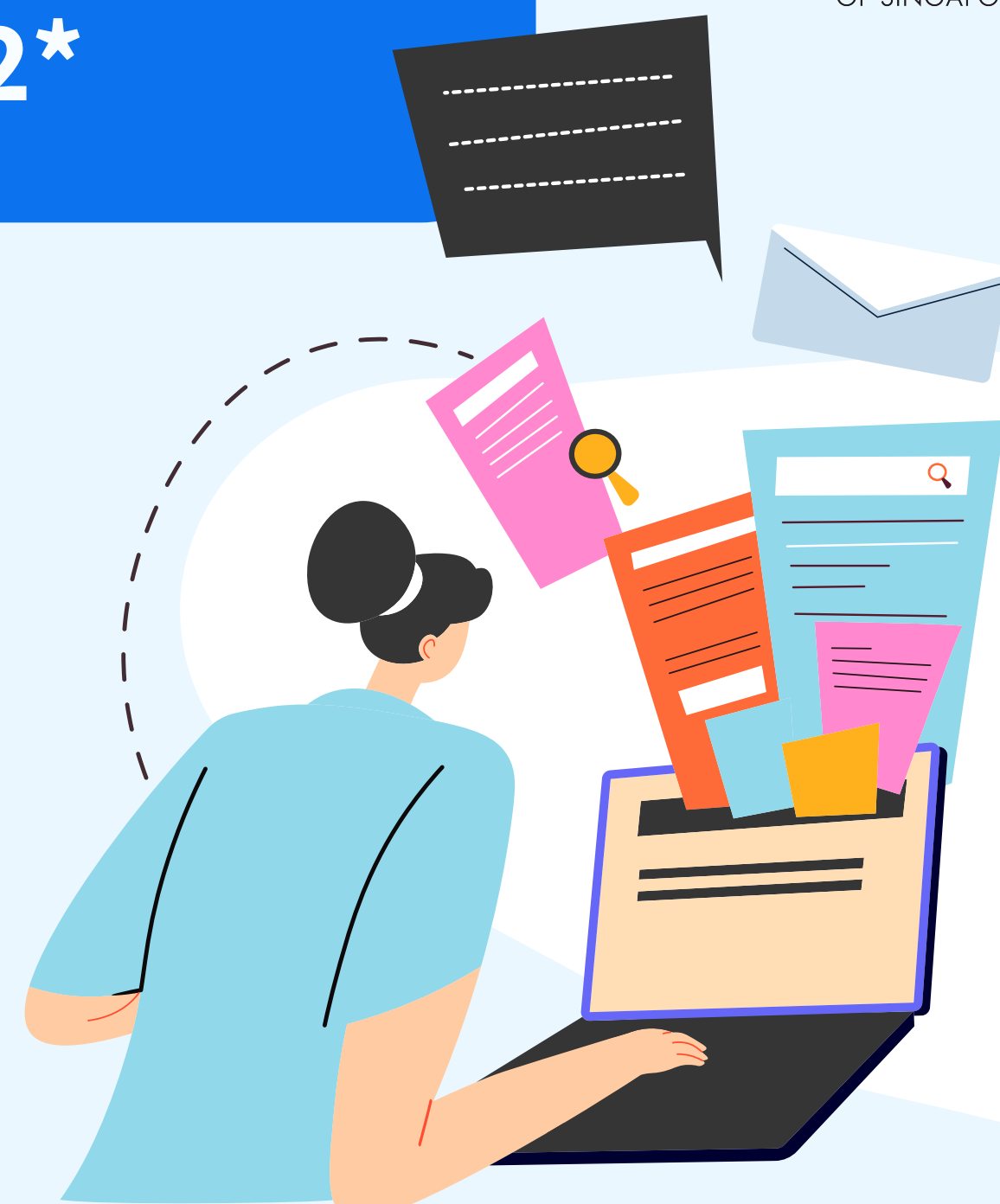
New e-Stamping Portal

launching on 20 Oct 2022*

To improve your stamping experience, IRAS has developed a new e-Stamping Portal with a freshly designed interface and enhanced features based on feedback received from users like yourself.

You can now look forward to a more seamless and intuitive stamping experience.

*Launch date may change, subject to system testing. We will inform you in advance should there be any change to the launch date.



Important

- From 12pm on 14 Oct till 8am on 20 Oct 2022, you will not be able to e-stamp any documents
- Any stamping or stamp duty payments that are due within this period will automatically be given an additional grace period of 8 working days to be completed

Decommissioning of
current e-Stamping
Portal

14 Oct 2022 (Fri),
12pm

New e-Stamping
Portal Go-Live

20 Oct 2022 (Thu),
8am

What you need to do

- e-Stamp, submit and pay the stamp duty on all outstanding records/drafts before 14 Oct 2022, 12pm
- Any drafts not submitted before 14 Oct 2022, 12pm will be deleted and **not** be ported over to the new e-Stamping Portal

Helpful resources

PDF & video guides

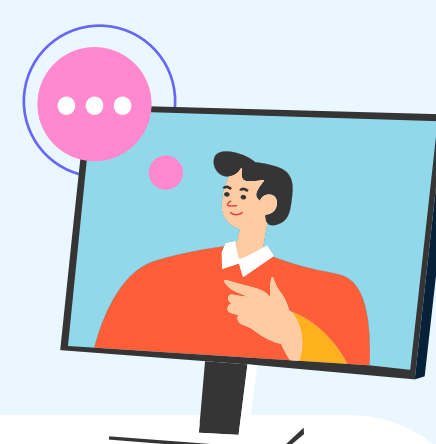


You may wish to [go through these materials](#) to familiarise yourself with the new portal so you can hit the ground running when it launches on 20 Oct 2022:

- How to Stamp Sale & Purchase Agreements
- How to Stamp Leases/Tenancy Agreements
 - How to Stamp Share Transfers
 - How to Pay Stamp Duty
- How to Retrieve Stamp Certificate
- How to Amend/Revise Stamping Record

Do share these materials with your colleagues or clients who may need them.

Webinar



Alternatively, you may join our Zoom webinar walkthrough on 11 Oct 2022, 3pm. Scan the QR code to register:



<https://go.gov.sg/sdwebinar>

Registration closes on 7 Oct 2022. Sign up now to secure your spot as there are limited slots available.

Frequently Asked Questions



1 Where can I find the new portal?

You can access it at <https://mytax.iras.gov.sg/> from 20 Oct 2022. You will also be automatically directed from the old portal.



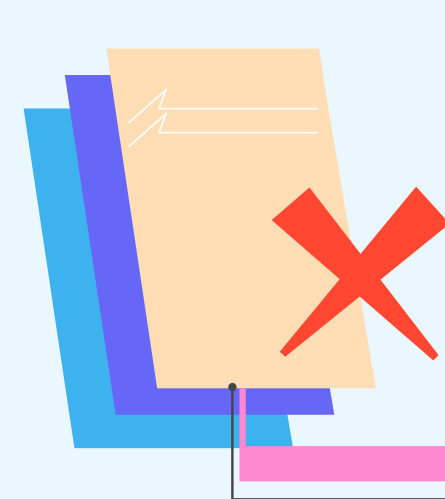
2 How do I log in to the new portal?

After navigating to the login page, click on Stamp Duty. Individual and business users can login via Singpass. Some non-login services will no longer be available.



3 Will I be able to access past records in the new portal?

Yes, you will be able to view past records with the same account that was used to stamp the document. Any of the liable parties of the document will also be able to retrieve their own records.



4 Will I still have access to the old portal?

You will no longer be able to access the old portal once the new portal is launched.