

How to Log In to myTax Portal using CorpPass for Companies



iras.gov.sg



[Twitter.com/IRAS_SG](https://twitter.com/IRAS_SG)



Facebook.com/irassg



INLAND REVENUE
AUTHORITY
OF SINGAPORE

How to Log In to myTax Portal



INLAND REVENUE
AUTHORITY
OF SINGAPORE

Go to mytax.iras.gov.sg > Business Tax Matters.

Announcement: Weekly maintenance hours (Singapore time):
Wed 2:00 AM - 6:00 AM | Sun 2:00 AM - 8:30 AM

Welcome to *myTax* Portal

Log in for

- Personal Tax Matters
with SingPass
- Business Tax Matters**
with CorpPass
- Client Tax Matters
with CorpPass

> Request SingPass/ CorpPass

CorpPass
Businesses to transact with IRAS using CorpPass from Q3 2018.

GIRO
Sign up for GIRO to enjoy up to 12 monthly interest-free instalments, or opt for once-a-year deduction.

Last updated 01 Jul 2018

About *myTax* Portal | Feedback | Technical FAQ (PDF, 2.17 MB) | Privacy Policy | Terms of Use

© 2018, Inland Revenue Authority of Singapore


IRAS 02/07/2018-01U



INLAND REVENUE
AUTHORITY
OF SINGAPORE

How to Log In to myTax Portal



[A](#) [A](#)  [Contact Us](#) | [Feedback](#) | [Sitemap](#) | [FAQ](#)

Log in with CorpPass

ⓘ

ⓘ

ⓘ

Remember Entity ID ⓘ

Forgot [Entity / CorpPass ID](#) or [Password](#)

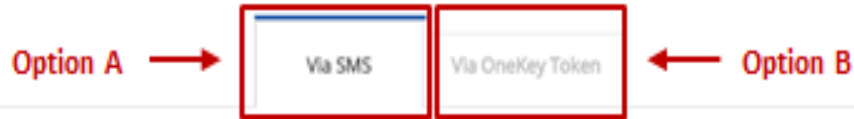
Enter your entity's UEN, your CorpPass ID and password.



INLAND REVENUE
AUTHORITY
OF SINGAPORE

How to Log In to myTax Portal

If you are a foreigner not eligible for SingPass, please refer to pages 5 to 6.




Complete 2FA verification via SMS or OneKey Token.

Via SMS

Click the button below to get your 6-digit One-Time Password(OTP) via SMS

Get OTP via SMS

Mobile OTP* 

Submit



INLAND REVENUE
AUTHORITY
OF SINGAPORE

How to Log In to myTax Portal

If you are a foreigner not eligible for SingPass, you will receive a push notification from the CorpPass 2FA mobile app on your phone. Click on the notification to open the app and enter your pre-set 6-digit passcode.

Note: If you have enabled Fingerprint Authentication (Touch ID) for future logins, you will be prompted to authenticate your identity using your fingerprint instead.

Via Mobile Token

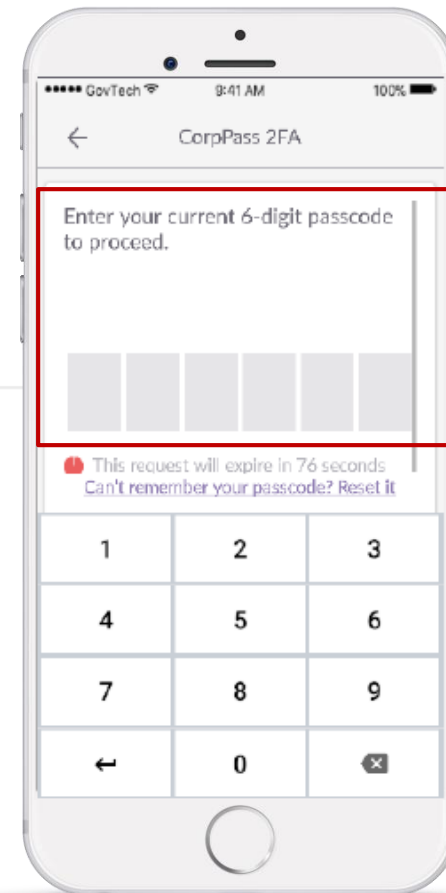
Via Mobile Token

A push notification sent to the mobile phone registered to the Mobile Token number. Tap on the notification to authenticate within 2 minutes before it expires.

If you do not receive the push notification within 30 seconds, please select "Resend".

Resend

Click [here](#) if you wish to request for a new Mobile Token



INLAND REVENUE
AUTHORITY
OF SINGAPORE

How to Log In to myTax Portal



Foreigners not eligible for SingPass will be prompted to enter the tax reference number assigned to them by IRAS.

Continue with

Tax Ref No.

A12345678Z

CANCEL

NEXT

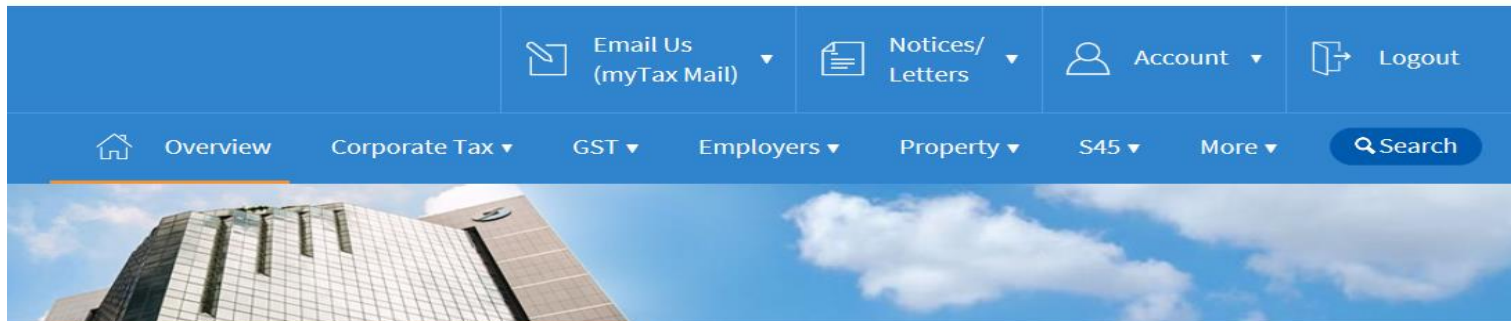


INLAND REVENUE
AUTHORITY
OF SINGAPORE

How to Log In to myTax Portal



[Feedback](#) | [Technical FAQ](#) (PDF, 2.17 MB)



Last login on Wednesday, 04 Jul 2018 9:14 AM (Singapore time).

Welcome to myTax Portal!

myTax Portal is a secured, personalised portal for you to view and manage your tax transactions with IRAS, at your convenience.

Use the navigation bar above to access a range of e-Services available to you.



INLAND REVENUE
AUTHORITY
OF SINGAPORE